

BAY CRANE

www.baycrane.com



LIEBHERR LR 1400/2

Table of content

Technical description, crawler travel gear, crane superstructure, boom system and optional equipment	3 – 4
Dimensions and working speeds	5 – 9
Hook blocks and hooks, reeving chart	10
Transportation plan	11 – 13
Boom/jib combinations	14
Lifting capacities and heights on S boom	15 – 16
Lifting capacities and heights on Sw/SwD/SwDB/BW boom/derrick combination	17 – 21
Lifting capacities and heights on SD/SDB/BW boom/derrick combination	22 – 24
Lifting capacities and heights on SW boom/jib combination	25 – 27
Lifting capacities and heights on SDWB/BW boom/jib combination	28 – 38

Technical description.

Crawler travel gear.

Frame:	Self-manufactured, torsion-resistant box-type design of high-tensile grain refined steel, comprising crawler centre section and two crawler carriers. The crawler carriers are pinned hydraulically.
Travel gear:	Maintenance-free, dirt-protected crawler travel gear with 3'11" (4'11" optional) track pads and centralized lubrication system for tumbler and track roller bearings.
Travel drive:	1 (optionally 2) hydraulic drives per crawler carrier, comprising axial piston variable displacement motor, planetary gear with spring-loaded, hydraulically releasable travel brake and tumbler. The crawler chains are controllable synchronously, independently and opposed to one another.
Central ballast:	94800 lbs, consisting of 2 slabs 12100 lbs each and 4 slabs 17600 lbs each.

Crane superstructure.

Frame:	Self-manufactured, torsion resistant weldment of high-tensile grain refined steel. Connected to crawler travel gear by a 3-row roller slewing rim for 360° continuous rotation.
Crane engine:	6-cylinder turbo-charged Liebherr Diesel engine, type D 9406 TI-E A3, water-cooled, output acc. to DIN 300 kW (408 h.p.) at 1900 min ⁻¹ , max. torque 1261 lbs/ft at 1400 min ⁻¹ . The engine corresponds to the EU directive 97/68/EG step II and is certified acc. to EPA/CARB and Tier 2. Fuel reservoir 185 gallons.
Crane drive:	Diesel-hydraulic by pump distribution gear with 4 axial piston variable displacement pumps with capacity control within closed oil circuits.
Crane control:	Servo-control with electronic synchronizing device by three four-way control levers and two two-way control levers (joy-stick type). Continuous control of the crane motions by variation of the hydraulic pumps, additionally by variation of the Diesel engine speed.
Winches 2 and 4:	Hydraulically driven cable drums by axial piston variable displacement motor and planetary gear with spring-loaded, hydraulically releasable static brake. Wearfree braking function during lowering by closed oil circuits. Winch 2 – hoist gear, winch 4 – derrick gear. Auxiliary winch for reeving of cables.
Slewing gear:	2 slewing gears (optionally 4), hydraulically powered by axial piston variable displacement motor and planetary gear with spring-loaded, hydraulically releasable static brake. Wearfree braking function by closed oil circuits.
Crane cabin:	Spacious, all-steel construction cabin, swivelling sideways and tiltable backwards, with operating and control instruments. Self-contained warm-water heating (optionally air-conditioning system).
Safety devices:	LICCON safe load indicator, hoist limit switches, electronic inclinometer, safety valves for the prevention of pipe and hose ruptures, anemometer.
Electrical system:	24 V DC, 2 batteries of 170 Ah each.
Superstructure ballast:	297700 lbs, consisting of 1 base slab of 33100 lbs and 12 slabs of 22000 lbs each.

Boom system.

Light version:	
L – main boom:	L 69 ft – 344 ft (L 344 ft only with derrick), system 2620.10 / 2620.8. Base section 44', intermediate sections 23' and 46', boom head adapter 23', 550 kips (optional 770 kips) head section 2', safety retaining ram.
LL – main boom:	LL 161 ft – 344 ft, system 2620.10 / 2115.10. Base section 44', intermediate sections 23' and 46', LL-reducing section 9'10", head adapter 11'6", 286 kips head section 26'3", safety retaining ram.
D – derrick boom:	D 92 ft, system 2125.20, base section 34'5", intermediate section 23', head section 34', derricking block, safety retaining ram.
N – jib:	N 69 ft – 299 ft, system 2115.10 / 1812.10, base section 31'2", intermediate sections 23' and 46', reducing section 11'6", 286 kips head section 26'3", retaining device, NA-frames 1 and 2.
F – fixed jib:	F 34 ft – 126 ft, system 1812.10. Base section 31'2", intermediate sections 23' and 46', reducing section 11'6", 286 kips head section 26'3", retaining device, FA-frame.
Heavy version:	
SL – main boom:	SL 69 ft – 367 ft (SL 322 ft – 367 ft only with derrick), system 2620.20 / 2620.10, base section 44', intermediate sections 23' and 46', head adapter 23', 550 kips (optional 770 kips), head section 2', safety retaining ram.
S – main boom:	S 69 ft – 390 ft (S 299 ft – 390 ft only with derrick), system 2620.20, base section 44', intermediate sections 23' and 46', head adapter 23', 550 kips (optional 770 kips), head section 2', safety retaining ram.
Sw – main boom:	Sw 92 ft – 367 ft (Sw 344 ft – 367 ft only with derrick), system 2620.20 / 2116.20, base section 44', intermediate sections 23' and 46', reducing section 13'5", 396 kips head section 34'5", safety retaining ram.
W – luffing fly jib:	W 92 ft – 299 ft, system 2116.20, base section 34', intermediate sections 23' and 46', 396 kips head section 34', retaining device, WA-frames 1 and 2.
B – suspended ballast:	Suspended ballast pallet with compensating rams and hydraulic telescopable guiding device for max. 573000 lbs derrick ballast at max. 49'3" counter-radius.
BW – ballast trailer:	Ballast trailer with compensating rams and hydraulic telescopable guiding device for max. 573000 lbs derrick ballast at max. 49'3" counter-radius.

Optional equipment.

Winches 1, 3, 5 and 6:

Winch 1 – hoist gear, winch 3 – luffing main boom/D-mode, winch 5 – variation of luffing fly jib, winch 6 – additional hoist gear.

Ballast:

Superstructure ballast 341800 lbs, additionally 2 slabs of 22000 lbs each.
Suspended ballast B 550000 lbs, 25 slabs of 22000 lbs each for a total of 573000 lbs derrick ballast.
Ballast trailer BW 507000 lbs, 23 slabs of 22000 lbs each for a total of 573000 lbs derrick ballast.

Mechanical additional support:

For the erection of long boom configurations without derrick ballast.

Hydraulic mounting supports:

For raising the basic machine during assembly/disassembly.

Mounting rams crawler carriers:

For self-assembly/disassembly of the crawler carriers by the crane.

Portable pin pulling device:

For the assembly/disassembly of the pins of the crawler travel gear and the boom pin intermediate sections.

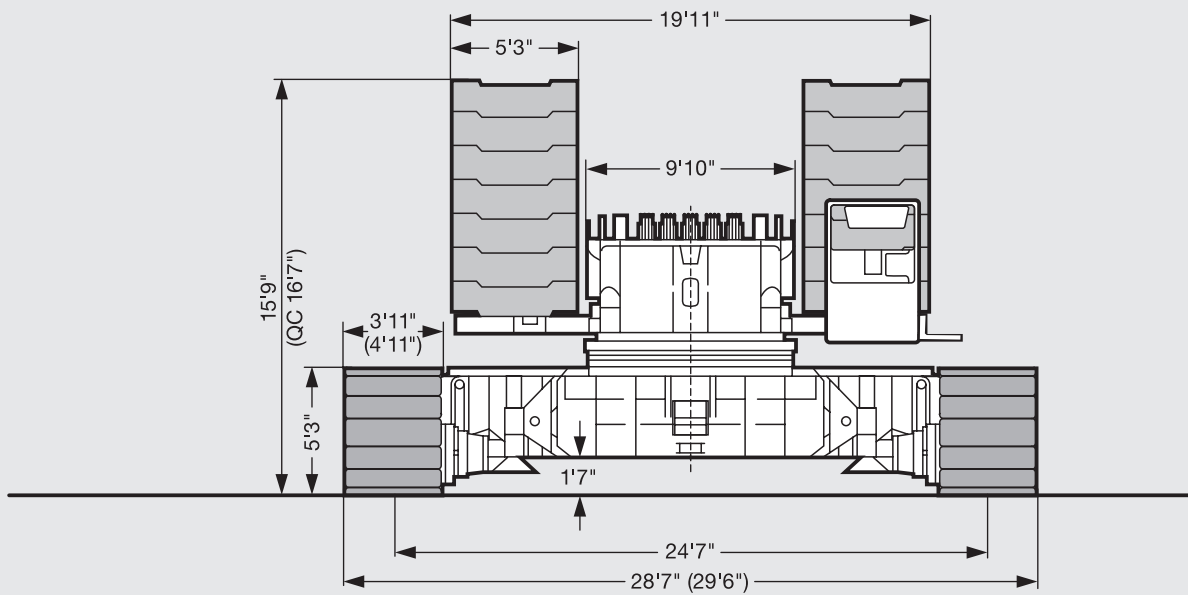
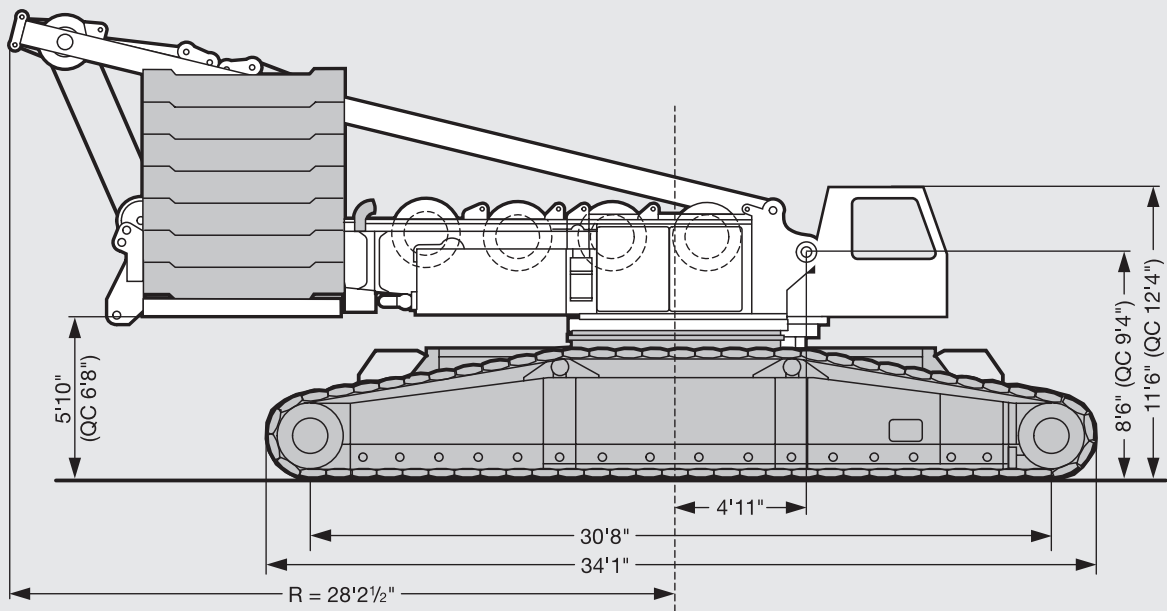
Quick Connection:

Rapid coupling system to facilitate separation of the superstructure from the crawler travel gear.

Whip line:

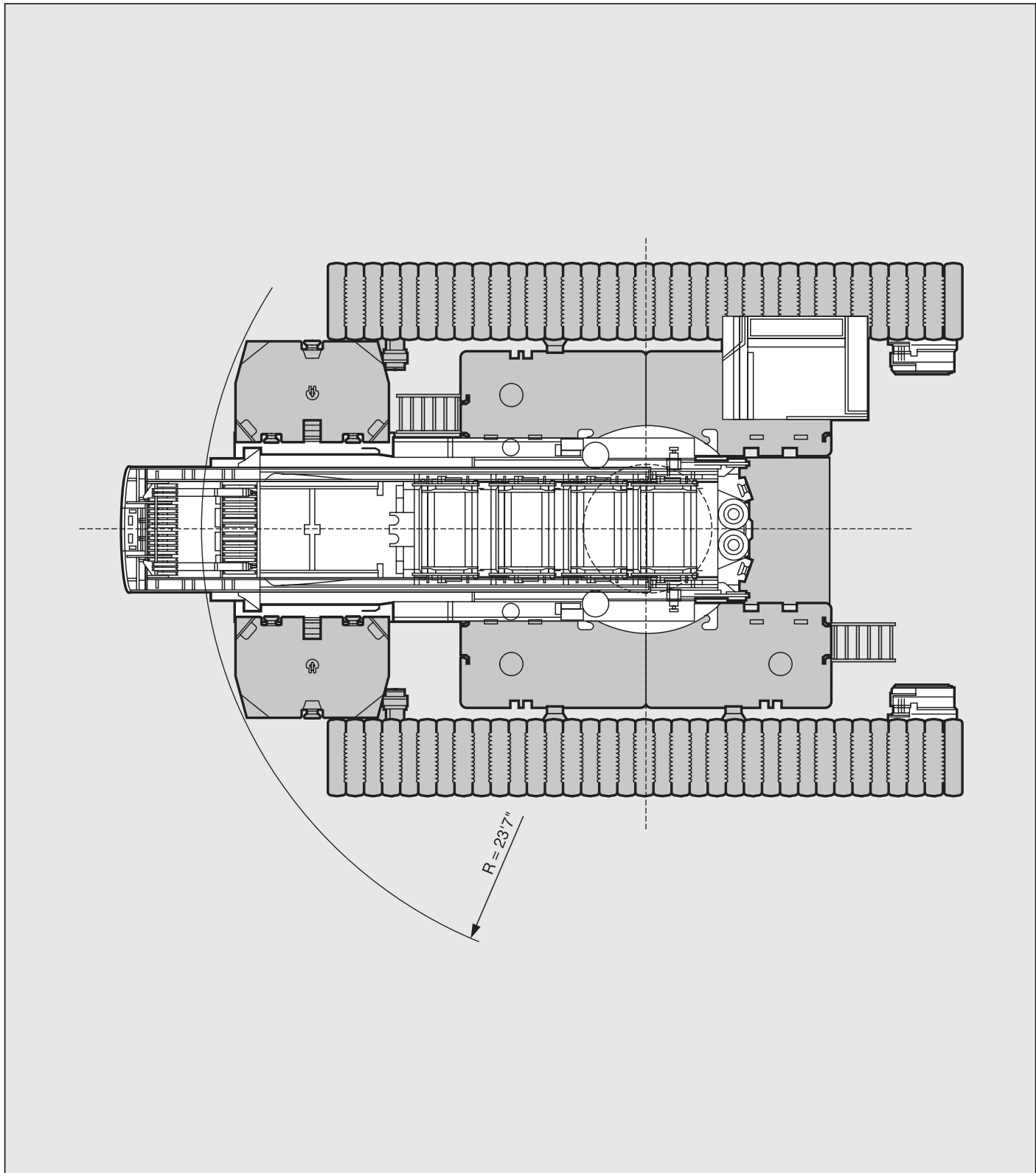
Whip line 79400 lbs to be fitted to L-, N-, S-, W-head.
Whip line 132200 lbs to be fitted to L-, S- and W-head.

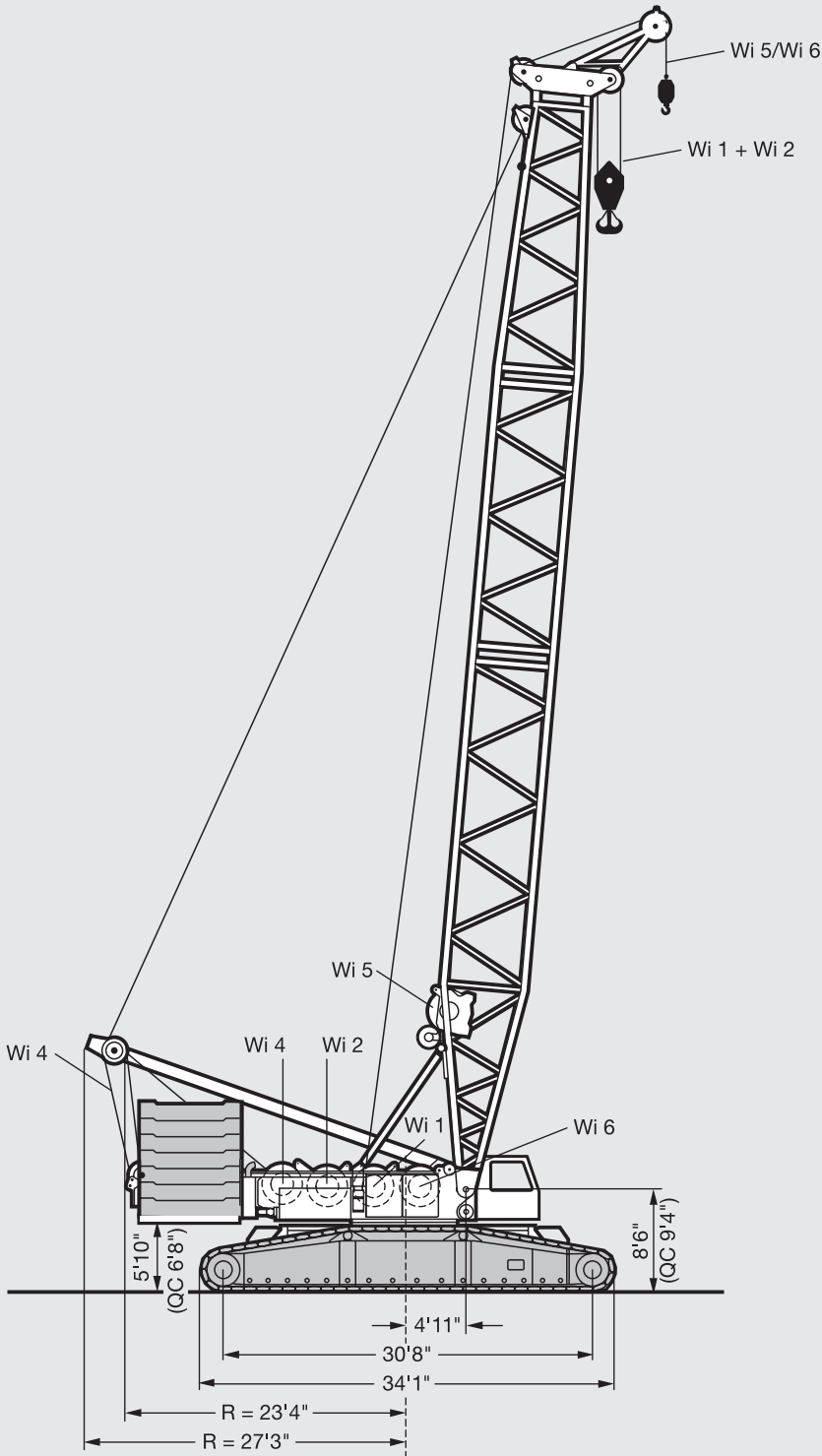
Further equipment items on request.



() = Pad width 4'11"

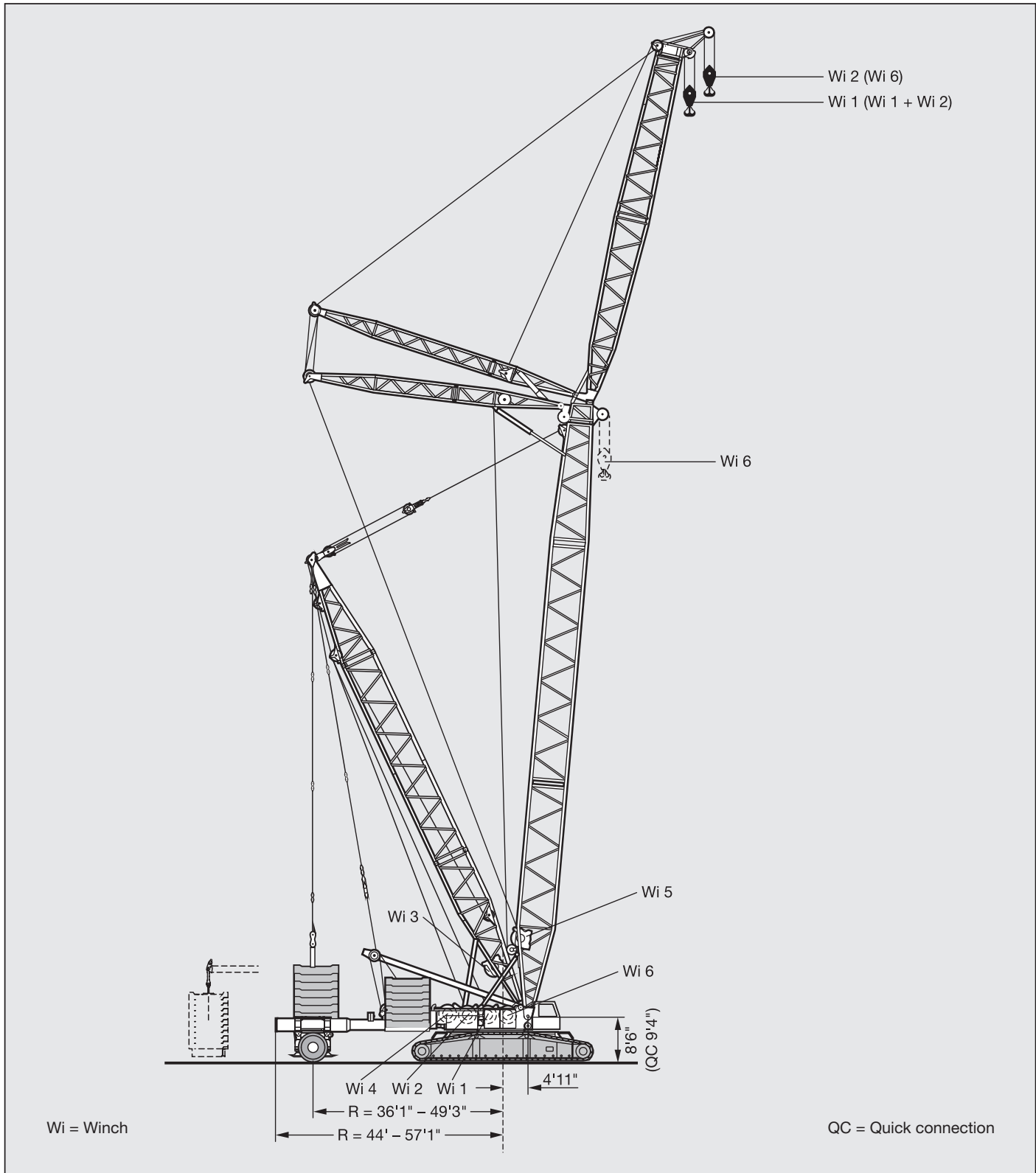
QC = Quick connection





Wi = Winch

QC = Quick connection



Working speeds.

LR 1400/2



	Driving force with one drive per crawler carrier	471870 lbs
	Total driving force with two drives per crawler carrier	769545 lbs
	Total weight with main boom S 69 ft, 297700 lbs counterweight, 94800 lbs central ballast and 176 kips hook block	661500 lbs
	Ground pressure at 661500 lbs total weight and 3'3" track pads	19,6 lbs/inch ²
		0 - 1,1



Drive	Mode	Speeds ft/min	Max. single line pull lbs	Rope diameter "	Rope length ft
	Hoist gear	0 - 440	27560	1"	2789
	Hoist gear	0 - 440	27560	1"	2789
	Derricking main boom/ D-operation	0 - 476	28660	1"	3051
	Derrick main boom	2 x 0 - 230	2 x 27560	1"	1903
	Derricking luffing fly jib	0 - 440	27560	1"	2461
	Hoist gear/Whipline	0 - 440	27560	1"	1640
	0 - 87°	approx. 4 min. for boom length 161 ft			
		0 - 1,2 rpm			

Hooks blocks and hooks.

LR 1400/2



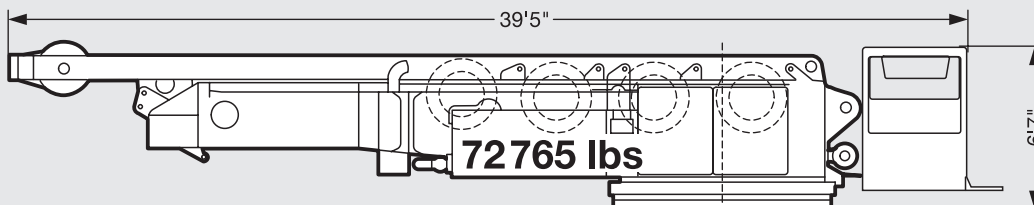
Load (kips)	No. of sheaves	No. of lines	Weight lbs	Dimension A (ft)	
880 (440)	2 x 9 (1 x 9)	2 x 19 (1 x 19)	17600 (11880)	17'5"	
550 (275)	2 x 5 (1 x 5)	2 x 11 (1 x 11)	13200 (8360)	15'1"	
352	7	15	7700	14'9"	
176	3	7	5720	13'9"	
79	1	3	3300	13'1"	
26.4	-	1	1320	10'6"	

Reeving chart.

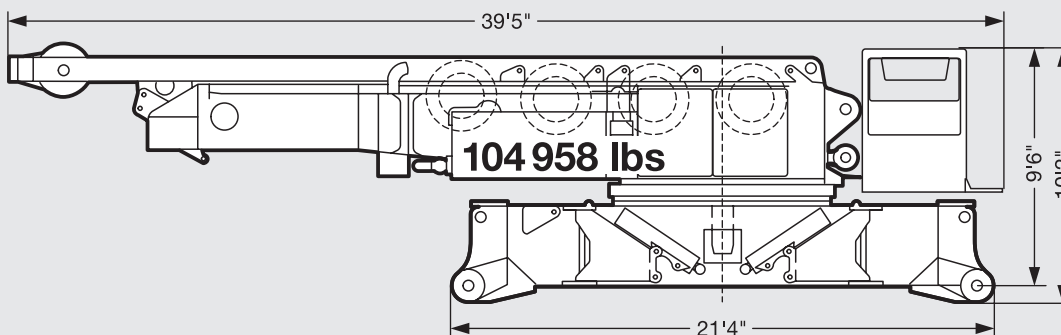
No. of lines	1	2	3	4	5	6	7	8	9	10	11	12	13	14	15	16	17	18	19
Max. capacity kips	26.4	52.9	79.4	105.8	130	156.5	180.7	205	227	249.1	273.3	293.2	315.2	335.1	357.1	377	394.6	415.5	438.7
	26.4 kips																		
	79 kips																		
	176 kips																		
	275 kips																		
	352 kips																		
440 kips																			

No. of lines	2 x 4	2 x 5	2 x 6	2 x 7	2 x 8	2 x 9	2 x 10	2 x 11	2 x 12	2 x 13	2 x 14	2 x 15	2 x 16	2 x 17	2 x 18	2 x 19
Max. capacity kips	211.6	262.3	313	361.5	410	456.3	500.4	551.1	588.6	632.7	672.4	714.2	754	793.6	833.3	881.8
	550/275 kips															
	880/440 kips															

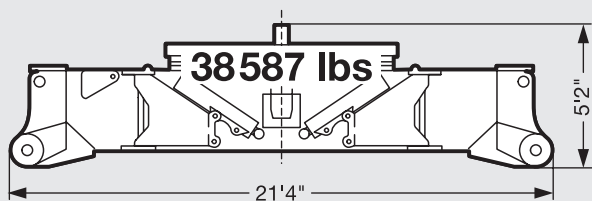
Superstructure with winch IV incl. rope and Quick Connection



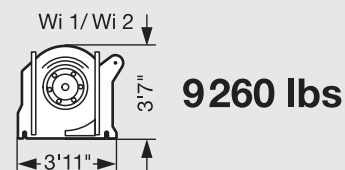
Superstructure with winch IV incl. rope and center section without Quick Connection



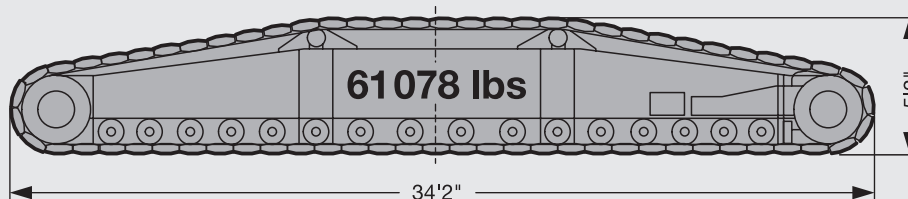
Crawler center section with Quick Connection



Winch 1/2 incl. rops



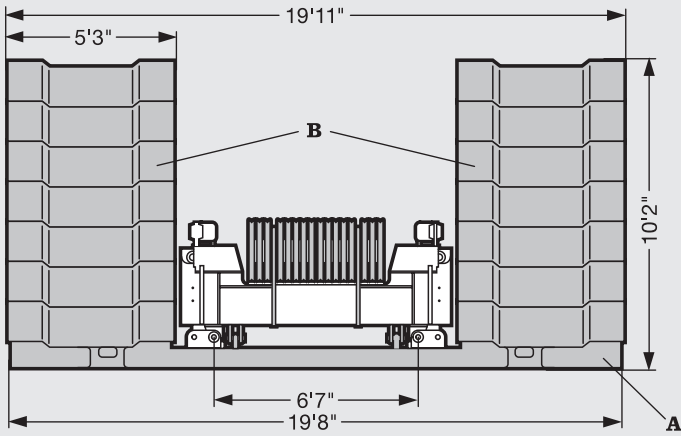
Crawler



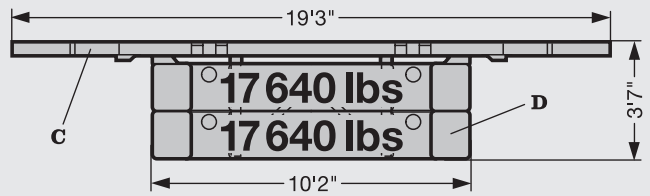
Wi = Winch

Counterweight versions

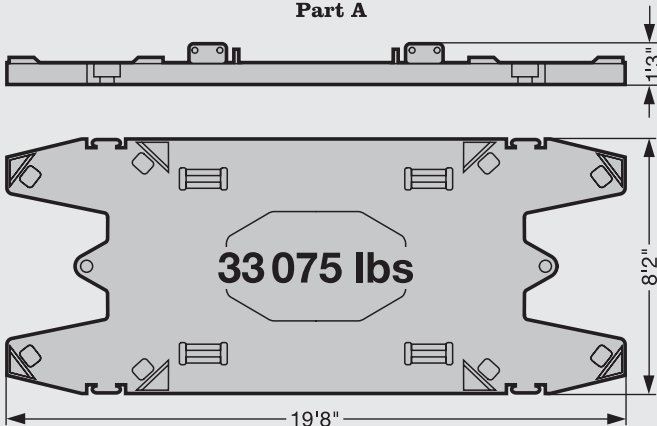
CWT at superstructure



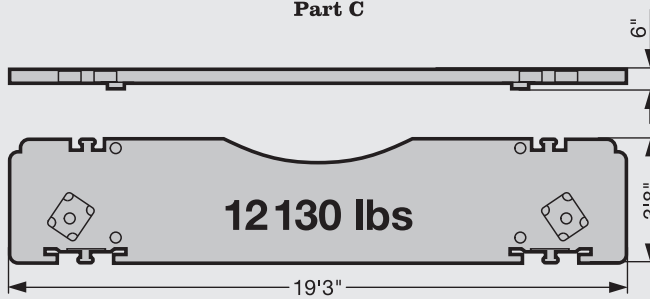
Central CWT



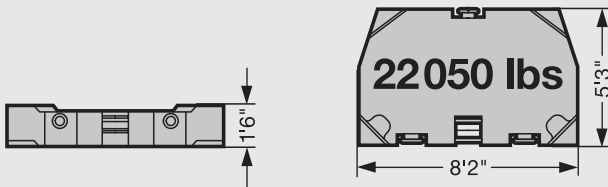
Part A



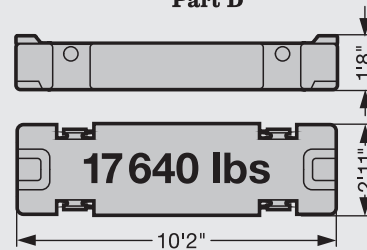
Part C



Part B



Part D

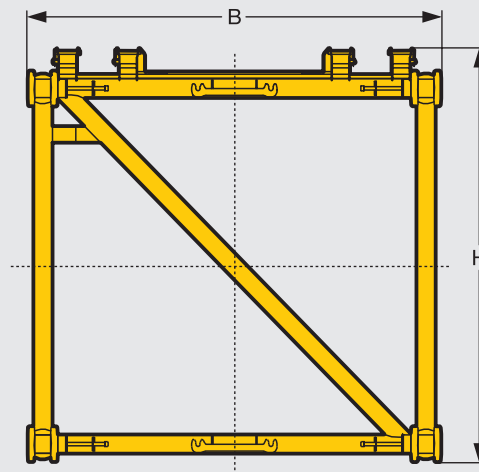


	Part A à 33075 lbs	Part B à 22050 lbs
297 kips	1 x	12 x
341 kips	1 x	14 x

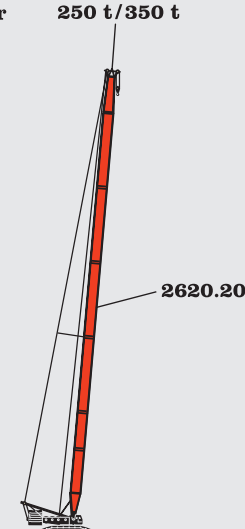
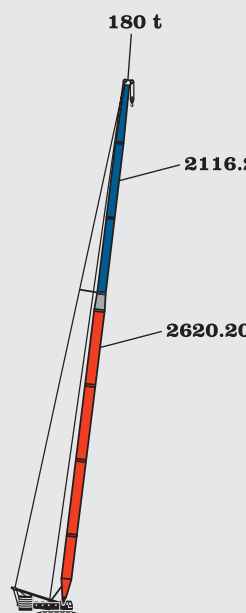
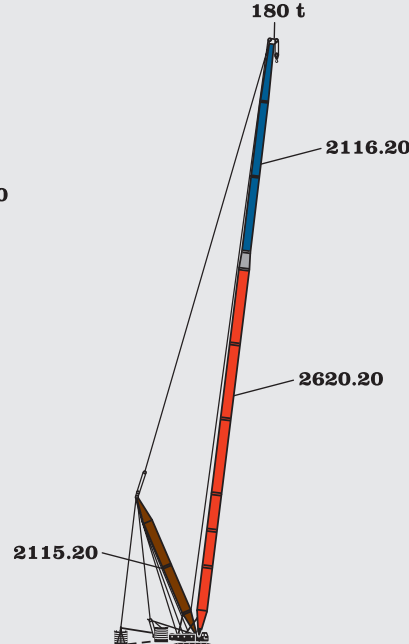

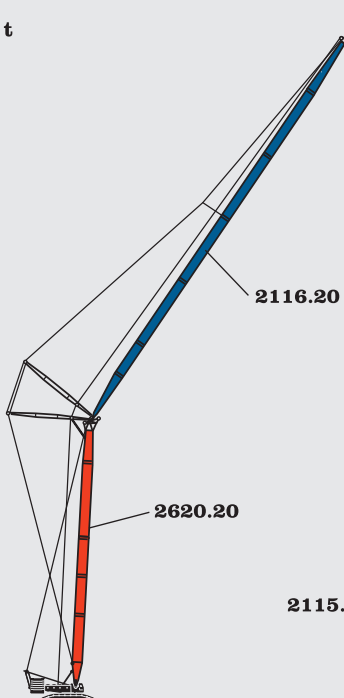
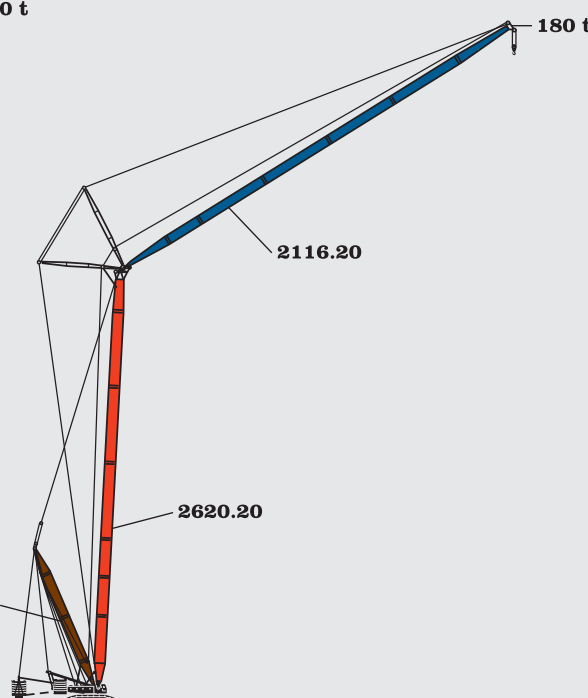
	Part C à 12130 lbs	Part D à 17640 lbs
24 kips	2 x	0 x
95 kips	2 x	4 x

Boom intermediate sections		B x H	Base length	Transport length	Weight lbs*
LA 2620.10	Green	9'2" x 7'10"	23'	24'3"	6400
			45'11"	47'3"	11900
LA 2620.8	Light Green	9'2" x 7'10"	45'11"	47'3"	9700
NA 2115.10	Orange	7'7" x 5'11"	23'	24'3"	3300
			45'11"	47'3"	6200
NI 1812.10	Yellow	6'7" x 4'11"	23'	24'3"	3000
			45'11"	47'3"	5500
D 2115.20	Brown	8'2" x 6'3"	23'	24'3"	5950
S 2620.20	Red	9'2" x 7'10"	23'	24'3"	8160
			45'11"	47'3"	15200
W 2116.20	Blue	7'10" x 6'3"	23'	24'3"	3750
			45'11"	47'3"	6600

* Weights incl. guy rods and bolts



Heavy weight design.

<p>S Hauptausleger, schwer Main boom, heavy Flèche principale, lourde</p> <p>w/W Nadelausleger, schwer Luffing jib, heavy Fléchette, lourde</p> <p>D Derrickausleger Derrick Flèche derrick</p> <p>BW Ballastwagen Ballast trailer Porteur de lest</p>	 <p>S S 21 m - 84 m</p>	 <p>Sw Sw 28 m - 98 m</p>	 <p>SwD/SwDB/BW Sw 35 m - 112 m D 21 m - 28 m</p>
<p>SD/SDB/BW S 28 m - 119 m D 21 m - 28 m</p>	 <p>SD/SDB/BW S 28 m - 119 m D 21 m - 28 m</p>	 <p>SW S 28 m - 56 m W 28 m - 91 m</p>	 <p>SDWB/BW S 35 m - 84 m W 28 m - 91 m D 21 m - 28 m</p>

Lifting capacities on S boom.

LR 1400/2



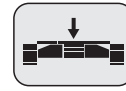
69 ft – 276 ft





360°



341800 lbs



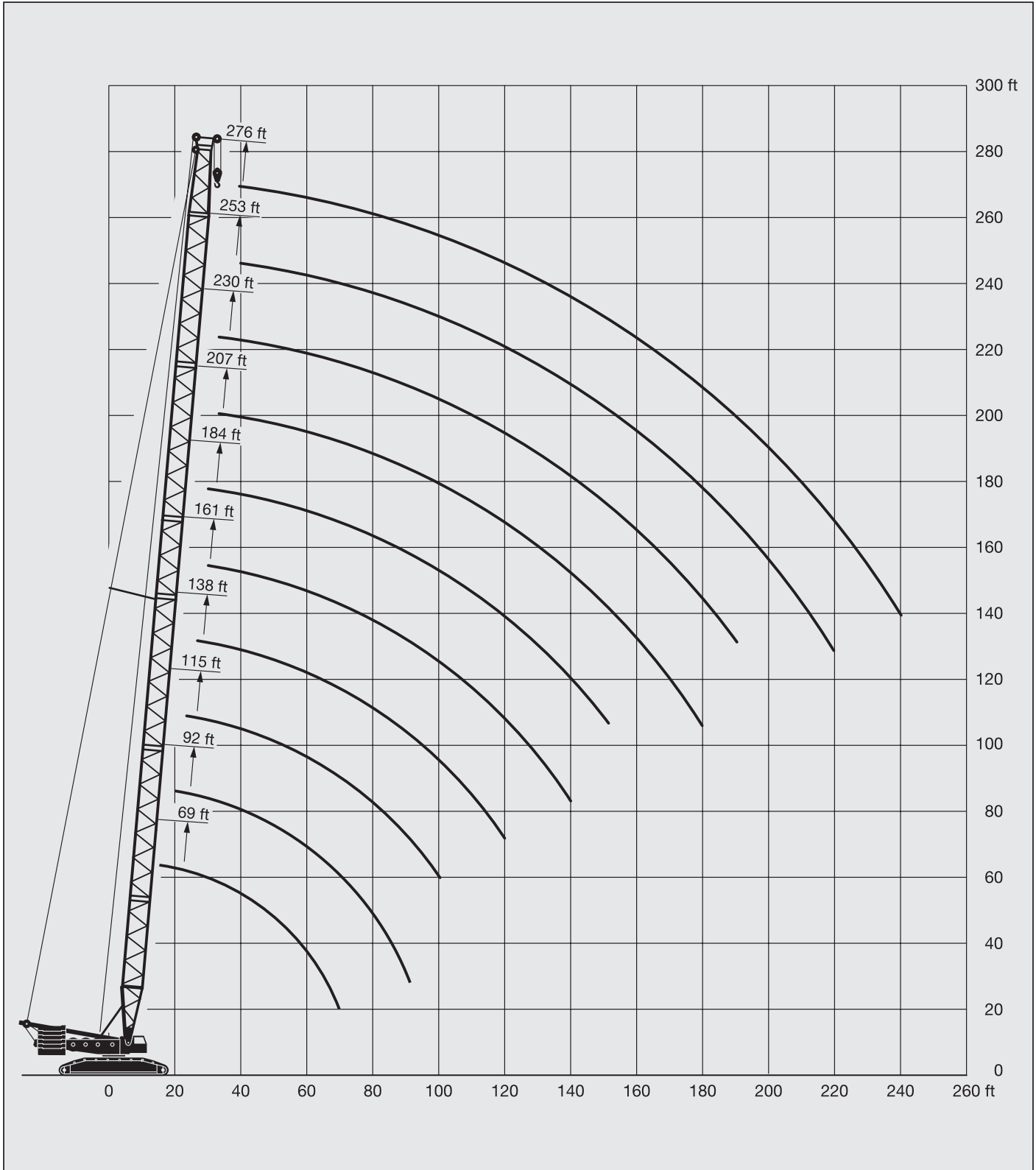
94800 lbs

 ft	69 ft	92 ft	115 ft	138 ft	161 ft	184 ft	207 ft	230 ft	253 ft	276 ft	 ft
15	772										15
16	772										16
17	762										17
18	746										18
19	712										19
20	679	663									20
21	649	634									21
22	621	608									22
23	595	583	596	581							23
24	574	562	574	561							24
26	531	519	531	519							26
28	495	506	496	485	474						28
30	462	473	464	453	443	420					30
32	434	444	436	425	417	394					32
34	427	419	410	401	392	370	348	319			34
36	403	395	387	378	370	348	329	310			36
38	382	375	367	359	350	330	311	295	271		38
40	363	356	349	340	331	312	295	280	265	239	40
45	322	315	309	301	291	275	261	248	236	222	45
50	281	278	275	268	259	246	234	222	211	201	50
55	246	245	243	238	232	221	210	200	190	182	55
60	217	216	215	212	209	199	190	181	172	164	60
65	194	193	192	189	188	182	173	165	157	150	65
70		174	173	171	169	166	159	151	144	137	70
75		159	157	155	153	151	146	139	132	126	75
80		145	144	141	140	138	134	128	122	116	80
85		134	132	129	128	126	124	118	112	107	85
90			122	119	118	116	114	110	104	99	90
95			113	111	109	107	105	102	97	92	95
100			106	103	101	98.5	96.5	95	90	85	100
105				95.5	94	91.5	89.5	87.5	83.5	79	105
110				89.5	87.5	85.5	83.5	81.5	78	73.5	110
115				84	82	79.5	77.5	75.5	72.5	68.5	115
120				79	77	74.5	72.5	70.5	67.5	63.5	120
125					72.5	70	67.5	65.5	63	58.8	125
130					68	65.5	63.5	61	58.5	54.4	130
135					64.5	62	59.7	57.4	54.6	50.6	135
140					61	58.3	56.1	53.8	50.9	46.9	140
150						52	49.6	47.2	44.1	40.1	150
160							44	41.3	38.1	34.1	160
170							38.9	36	32.9	28.8	170
180							34.6	31.6	28.4	24.1	180
190								27.7	24.2	19.7	190
200									20.4	15.8	200
210									17	12.8	210
220									14.3	10.6	220
230										8.6	230
240										6.8	240

TAB 124056 / 124057

Lifting heights on S boom.

LR 1400/2



Lifting capacities on Sw boom.

LR 1400/2



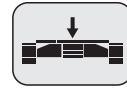
92 ft - 322 ft



360°



341800 lbs



94800 lbs

ft	92 ft	115 ft	138 ft	161 ft	184 ft	207 ft	230 ft	253 ft	276 ft	299 ft	322 ft	ft
20	397											20
21	397											21
22	397	397										22
23	397	397	397									23
24	397	397	397									24
26	397	397	397									26
28	397	397	397	397	328							28
30	397	397	397	395	319	292						30
32	397	397	397	390	309	281						32
34	393	391	385	379	299	271	243					34
36	387	380	366	365	289	261	238					36
38	367	368	360	352	280	252	234	241				38
40	365	359	352	339	272	244	230	239	220	197		40
45	325	319	314	301	252	224	221	232	216	185		45
50	286	283	280	269	233	206	213	219	207	180	160	50
55	251	251	249	242	216	190	204	202	194	176	158	55
60	222	221	220	219	201	176	192	184	177	170	155	60
65	199	199	197	195	187	163	176	169	162	157	149	65
70	181	180	179	177	174	152	163	156	150	145	138	70
75	165	164	163	161	160	141	151	144	138	134	128	75
80	151	151	149	147	146	130	140	134	128	124	119	80
85	140	139	138	135	134	120	130	125	119	116	110	85
90		129	128	125	124	112	121	116	112	108	103	90
95		120	119	117	115	106	112	109	104	101	96	95
100		112	111	109	108	101	104	102	98	95	90	100
105			104	102	100	95.5	96.5	95	92	89	84.5	105
110			98	95.5	94	91	90.5	88.5	86.5	83.5	79	110
115			92.5	90	88.5	86	84.5	83	81	79	74.5	115
120			87	85	83.5	81	79.5	77.5	76	74.5	70	120
125				80	79	76.5	74.5	73	71.5	70	66	125
130				76	74.5	72.5	70.5	68.5	67	66	62	130
135				72.5	71	68.5	66.5	64.5	63	62.5	58.4	135
140				69	67.5	65	63	61	59.5	58.8	54.8	140
150					61	58.6	56.6	54.6	52.9	52.2	48.1	150
160						53	51	48.9	47.2	46.3	42.2	160
170						48	46.1	44	42.2	41.1	37	170
180						42.4	42	39.8	37.8	36.6	32.5	180
190							38.4	36	33.8	32.5	28.3	190
200								32.4	30.2	28.8	24.5	200
210								29.3	26.9	25.4	21	210
220								26.5	24.1	22.4	17.8	220
230									21.5	19.6	15.1	230
240										17	12.9	240
250										14.6	11.2	250
260										13.1	9.6	260
270											8.2	270

TAB 124009 / 124010

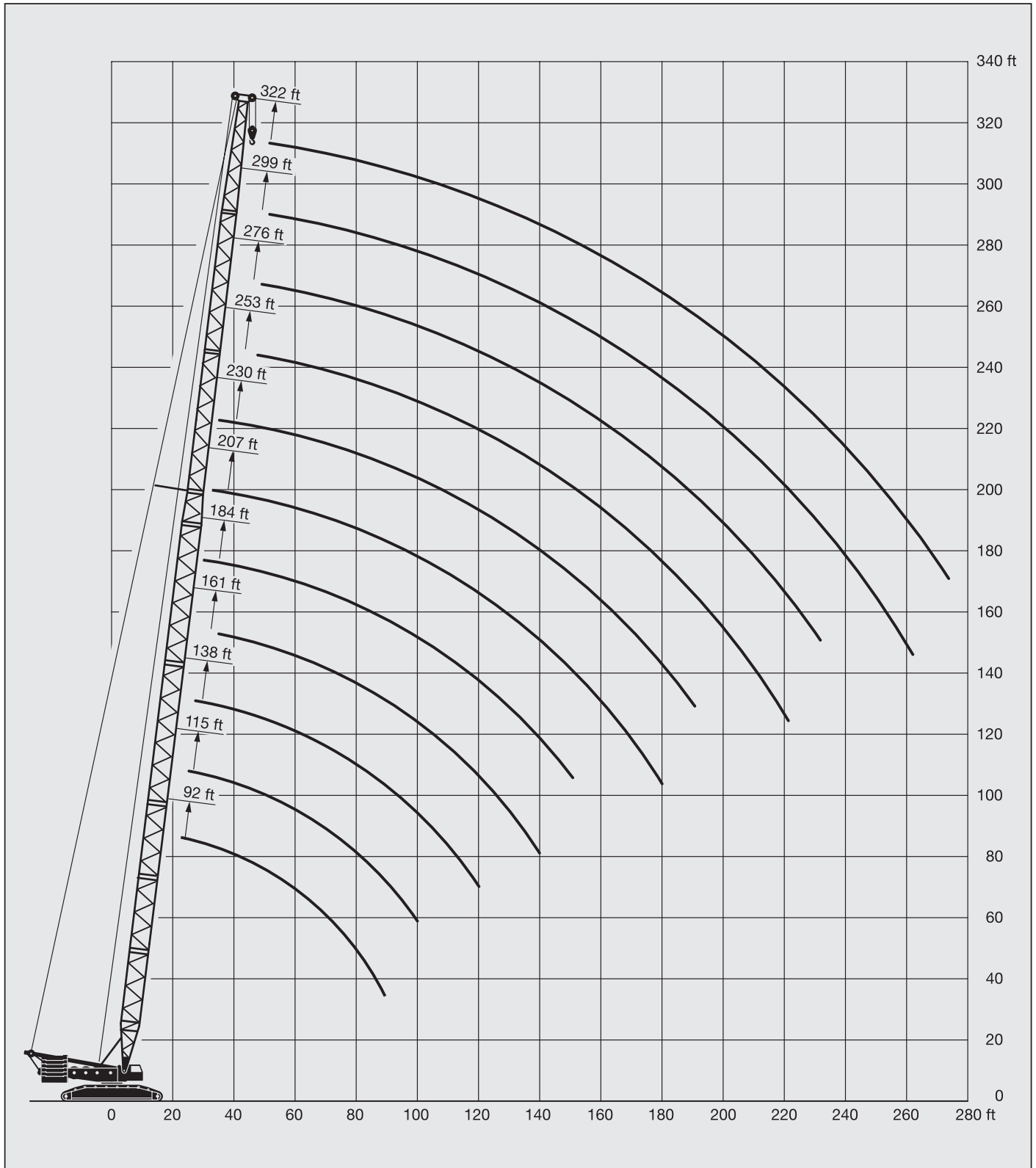
Remarks referring to load charts.

1. When calculating crane stresses and loads, German Industrial Standards (DIN) are applicable, in conformity with new German legislation (published 2/85): The lifting capacities (stability margin) DIN/ISO are as laid down in DIN 15019, part 2, and ISO 4305. The crane's structural steel works is in accordance with DIN 15018, part 3. Design and construction of the crane comply with DIN 15018, part 2, and with F. E. M. regulations.
2. Lifting capacities are given in kips.
3. The weight of the hook blocks and hooks as well as of lifting tackle must be deducted from the lifting capacities.
4. Working radii are measured from the slewing centreline.
5. The subsoil must be even and of good bearing capacity.
6. Subject to modification of lifting capacities.
7. Lifting capacities above 770 kips only with special equipment.
8. The crane can be displaced with suspended loads as stated in the load charts. Operating conditions must conform to the rules in the operating instructions.

Lifting capacities are given in kips (1,000 lbs).

Lifting heights on Sw boom.

LR 1400/2



Lifting capacities on SwD boom/derrick combination.

LR 1400/2



115 ft - 367 ft



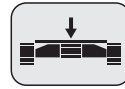
92 ft





360°



297700 lbs



94800 lbs

 ft	115 ft	138 ft	161 ft	184 ft	207 ft	230 ft	253 ft	276 ft*	299 ft*	322 ft*	344 ft*	367 ft*	 ft
28		397											28
30		397	397										30
32		397	397										32
34	390	389	385	365									34
36	377	375	366	348									36
38	354	352	347	330		313	282						38
40	332	330	328	328	328	309	280	241					40
45	287	285	282	282	283	279	266	233					45
50	252	250	247	247	247	247	242	225	213	178			50
55	224	221	219	218	218	218	216	210	203	175	167	128	55
60	201	198	195	195	195	194	192	190	185	171	164	128	60
65	182	179	176	175	175	174	173	170	168	164	158	128	65
70	166	163	160	159	159	158	156	154	151	152	146	128	70
75	152	149	146	145	145	144	142	140	137	138	134	125	75
80	140	137	134	133	133	132	130	127	125	126	122	119	80
85	130	126	123	123	122	121	119	116	114	115	111	110	85
90	121	117	114	114	113	112	110	107	105	105	102	101	90
95	113	109	106	105	105	104	102	99	96	96.5	93.5	92.5	95
100	105	102	99	98	97.5	96	94	91.5	88.5	89	86	84.5	100
105		95.5	92.5	91.5	90.5	89.5	87	84.5	81.5	82	79	77.5	105
110		89.5	86.5	85.5	85	83.5	81.5	78.5	75.5	76	73	71.5	110
115		84	81	80	79.5	78	76	73	70	70.5	67.5	66	115
120		79.5	76.5	75	74.5	73	71	68	65	65.5	62.5	60.5	120
125			72	70.5	70	68.5	66	63.5	60.5	60.5	57.6	55.9	125
130			68	66.5	65.5	64.5	62	59.1	56.2	56.4	53.3	51.6	130
135			64	63	62	60.5	58.2	55.3	52.5	52.6	49.5	47.7	135
140			61	59.4	58.6	57.1	54.7	51.7	48.9	49	45.9	44.1	140
150				53.1	52.2	50.8	48.2	45.3	42.3	42.4	39.3	37.4	150
160					46.7	45.2	42.6	39.6	36.6	36.7	33.5	31.6	160
170					41.9	40.3	37.6	34.6	31.6	31.6	28.5	26.5	170
180					37.8	36.1	33.4	30.3	27.3	27.3	24.1	21.9	180
190						32.4	29.6	26.5	23.4	23.3	20.2	17.5	190
200							26.2	23	19.9	19.8	16.6	13.7	200
210							23.1	19.9	16.8	16.6	13.4	11.1	210
220							20.5	17.2	14	13.8	10.6	8.4	220
230								14.7	11.5	11.2	8		230
240								12.7	9.2	8.8			240
250									7.1				250
260									5.2				260

* erectable only with derrick ballast

TAB 124048 / 124049

Lifting capacities on SwDB/SwDBW boom/derrick combination.

LR 1400/2



115 ft -
367 ft



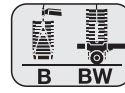
92 ft



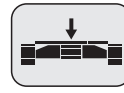
360°



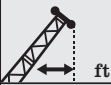
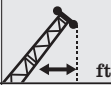
297700 lbs



551000 lbs
49 ft



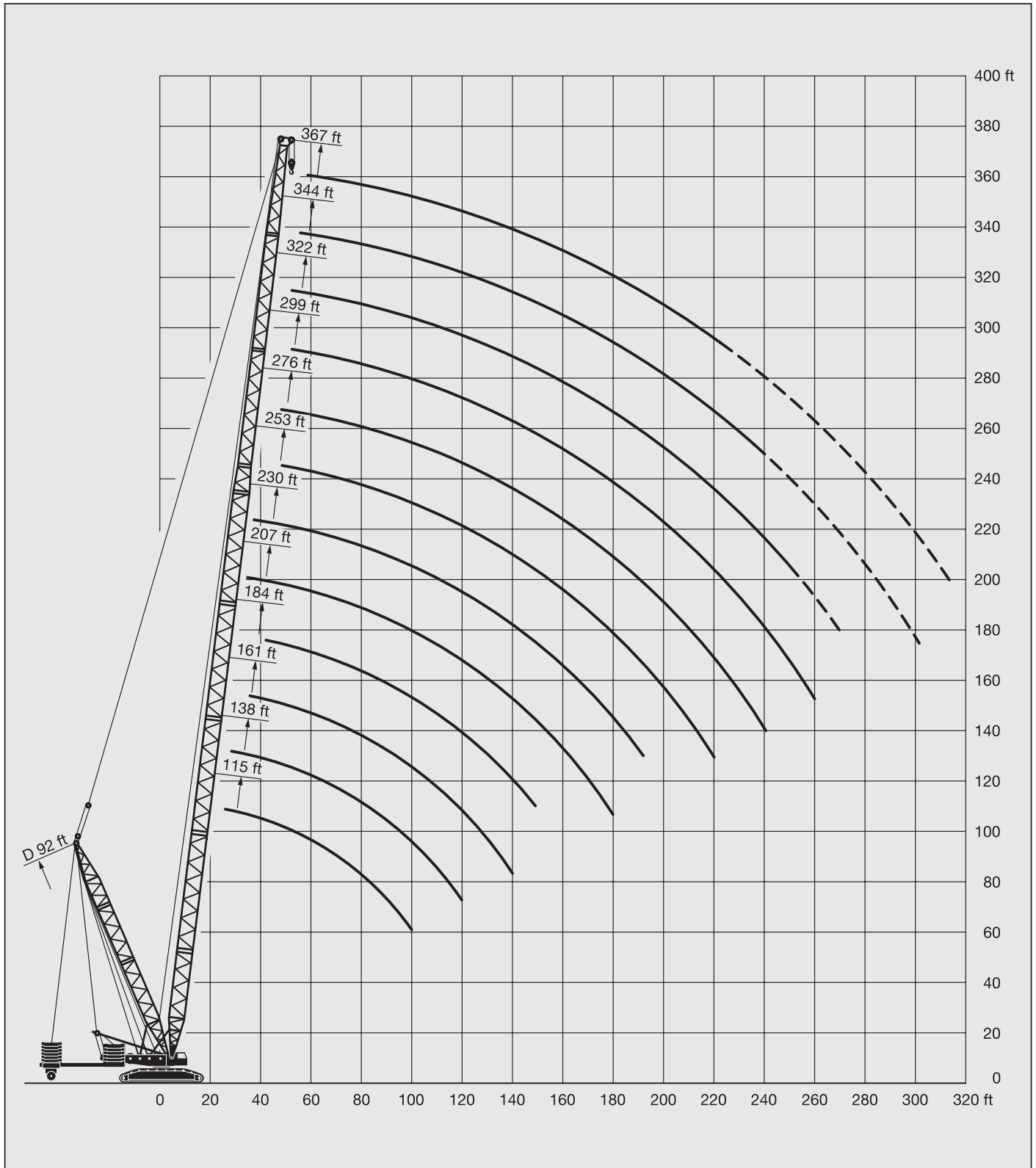
94800 lbs

 ft	115 ft	138 ft	161 ft	184 ft	207 ft	230 ft	253 ft	276 ft	299 ft	322 ft	344 ft	367 ft	 ft
28	397	397											28
30	397	397	397										30
32	397	397	397										32
34	397	397	397	375									34
36	397	397	397	375									36
38	397	397	397	375	343	314	283						38
40	397	397	397	375	343	314	282	242					40
45	397	397	397	375	343	314	277	233					45
50	397	397	397	375	343	309	270	225	215	178			50
55	397	397	397	375	338	301	262	218	210	175	167	128	55
60	397	397	397	373	327	291	254	211	203	170	164	128	60
65	397	397	397	363	318	281	244	204	195	167	161	128	65
70	397	397	397	355	309	271	234	197	188	163	159	128	70
75	397	397	391	347	300	261	224	189	181	159	155	128	75
80	397	395	379	339	291	252	215	181	175	154	151	127	80
85	397	388	364	329	283	243	207	174	168	149	146	126	85
90	387	372	349	318	273	235	199	167	161	144	142	123	90
95	370	358	336	308	263	227	191	161	155	139	136	119	95
100	348	344	323	298	254	218	184	155	150	134	131	116	100
105		328	311	287	245	210	177	149	145	130	127	114	105
110		311	299	277	236	202	171	144	140	126	123	110	110
115		296	288	267	228	194	164	139	135	122	119	106	115
120		282	278	258	220	187	158	134	131	118	116	102	120
125			269	250	212	180	151	129	126	114	112	99	125
130			258	242	205	173	145	124	122	110	107	96.5	130
135			248	233	197	167	140	121	119	107	104	94.5	135
140			238	224	190	161	134	119	117	104	101	92	140
150				207	175	149	123	114	112	98.5	96.5	87.5	150
160					161	137	113	111	107	93	91	82.5	160
170					149	127	104	108	104	88	85	77.5	170
180					137	117	95.5	105	100	83.5	81	73.5	180
190						107	87.5	102	97.5	79.5	77.5	69.5	190
200							80	100	95	75	74	66.5	200
210							72.5	97.5	92.5	71	70.5	64	210
220							66	95	90.5	68	68	61.5	220
230								91.5	88	66.5	65.5	58.9	230
240								88	85.5	65.5	63.5	56.6	240
250									82.5	64.5	61.5	54.5	250
260									80	63	59.9	52.5	260
270										61.5	58.3	50.6	270
280											56.6	48.8	280
290											54.9	47	290
300											53.2	45.3	300
310												43.8	310

TAB 124003

Lifting heights on SwDB/SwDBW boom/derrick combination.

LR 1400/2



Lifting capacities on SD boom/derrick combination.

LR 1400/2



92 ft - 390 ft



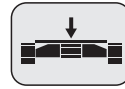
92 ft





360°



297700 lbs
341800 lbs



94800 lbs

 ft	92 ft	115 ft	138 ft	161 ft	184 ft	207 ft	230 ft	253 ft	276 ft	299 ft	322 ft	344 ft	367 ft	390 ft	 ft
23		582	570												23
24		561	550												24
26		519	509												26
28	494	484	475	466											28
30	461	452	443	435	446										30
32	429	425	416	406	419										32
34	399	397	396	398	393	374	354								34
36	369	368	366	368	369	352	334								36
38	346	344	342	343	344	334	317	302							38
40	324	322	320	321	321	316	301	287	274						40
45	279	277	275	275	275	273	267	255	244						45
50	245	242	240	239	239	238	235	229	219	210	199				50
55	217	214	211	211	210	208	206	204	198	190	182	173	157	137	55
60	193	191	188	187	186	184	182	180	178	172	165	157	151	135	60
65	175	172	169	167	166	164	162	160	158	157	151	143	137	129	65
70	159	156	153	151	150	148	146	143	142	141	138	131	126	118	70
75	146	142	139	137	136	134	131	129	127	126	125	119	115	108	75
80	134	130	127	125	123	121	119	116	115	113	112	108	106	99	80
85	124	120	116	115	113	111	108	106	104	102	100	96.5	96	91	85
90		111	108	106	104	101	98.5	96	94	92.5	91	87	86.5	82.5	90
95		103	99.5	97.5	95.5	93	90.5	87.5	85.5	84	82	78.5	77.5	74	95
100		96.5	92.5	90	88	85.5	83	80	78	76	74.5	70.5	69.5	66	100
105			86	83.5	81	78.5	76	73.5	71	69	67	63.5	62.5	58.9	105
110			80	77.5	75.5	73	70	67.5	65	63	61	57.2	56	52.6	110
115			75	72.5	70	67.5	64.5	61.5	59.4	57.4	55.3	51.5	50.2	46.8	115
120			70.5	67.5	65	62.5	59.5	56.6	54.2	52.3	50.1	46.3	44.9	41.5	120
125				63	60.5	57.8	54.9	52	49.5	47.5	45.3	41.5	40	36.6	125
130				59.2	56.4	53.6	50.7	47.8	45.3	43.2	41	37.1	35.7	32.2	130
135				55.7	52.8	50	47	44	41.5	39.4	37.1	33.3	31.7	28.3	135
140				52.4	49.3	46.4	43.4	40.4	37.9	35.7	33.5	29.6	28	24.5	140
150					43.2	40.1	37	34	31.4	29.1	26.8	22.5	21.2	17.6	150
160						34.6	31.4	28.3	25.6	23.4	20.9	16.2	15.3		160
170						29.9	26.6	23.4	20.6	18.3	15.8	11.4	10.1		170
180						26	22.5	19.2	16.3	14	11.4				180
190							18.8	15.4	12.5	10.1					190
200								12							200
210								9							210
220								6.4							220

TAB 124052 / 124053

Lifting capacities on SDB/SDBW boom/derrick combination.

LR 1400/2



92 ft - 390 ft



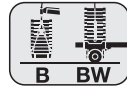
92 ft



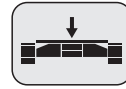
360°



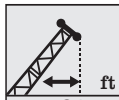
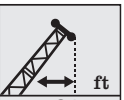
297700 lbs



551000 lbs / 49 ft



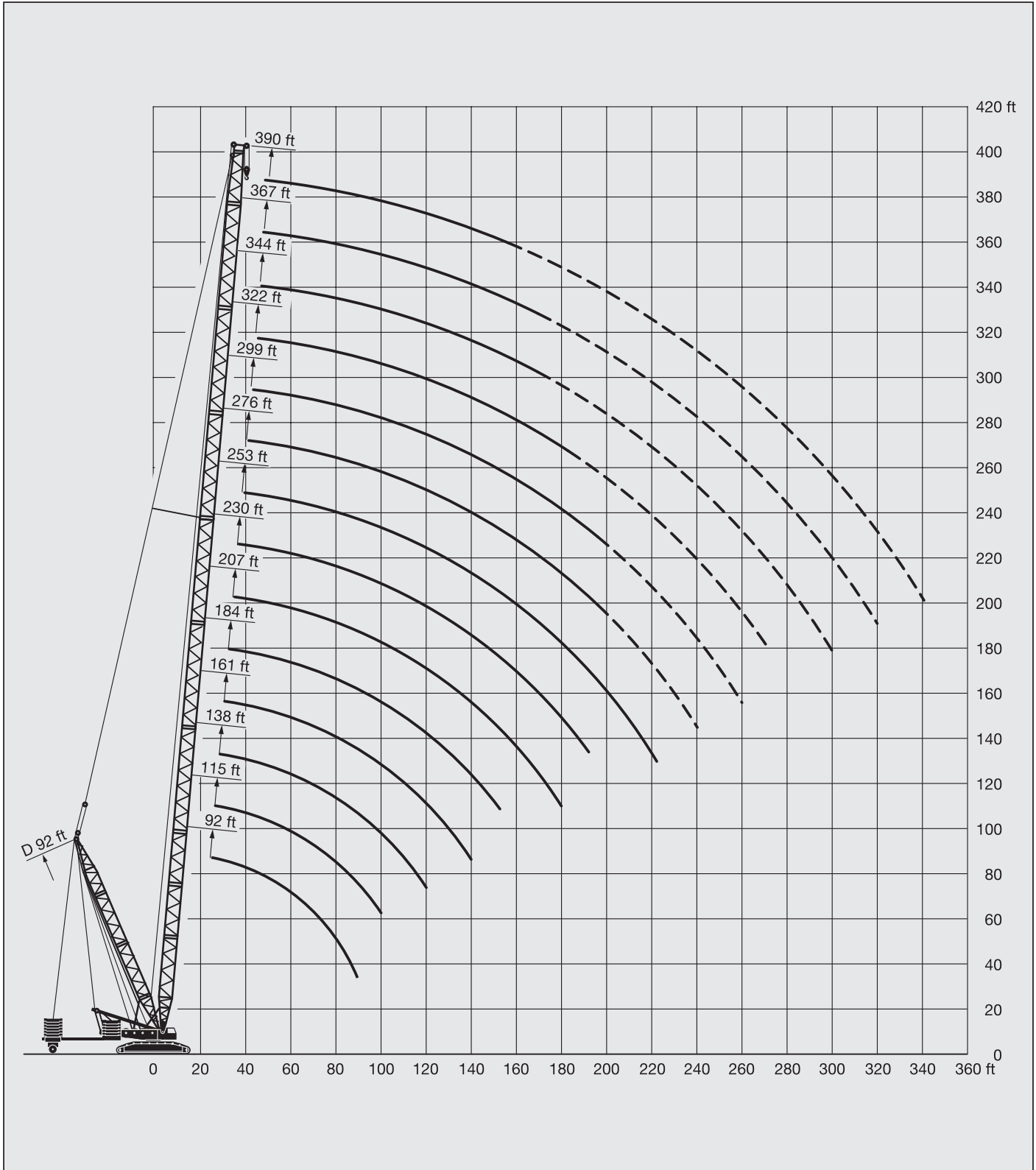
94800 lbs

 ft	92 ft	115 ft	138 ft	161 ft	184 ft	207 ft	230 ft	253 ft	276 ft	299 ft	322 ft	344 ft	367 ft	390 ft	 ft
21	772														21
22	772														22
23	772	772	772												23
24	772	772	772												24
26	772	772	772	772											26
28	768	772	772	772											28
30	763	772	772	772	720										30
32	758	772	772	772	705	624	524								32
34	754	770	772	770	691	623	524								34
36	750	766	772	768	677	622	523	443							36
38	746	763	760	746	664	621	522	442							38
40	740	755	745	724	652	617	522	442	352						40
45	705	707	692	675	618	588	520	441	350	293	254				45
50	667	660	646	630	586	561	504	437	347	290	254				50
55	627	617	605	591	553	532	485	429	344	287	254	208	179	150	55
60	589	580	569	556	521	502	466	416	341	284	253	207	178	150	60
65	556	547	536	524	490	475	448	402	338	281	253	207	177	149	65
70	510	516	508	497	465	451	427	389	332	274	253	206	175	149	70
75	462	481	476	469	442	429	407	377	326	267	252	203	173	148	75
80	414	449	443	440	420	408	388	364	320	261	251	200	169	148	80
85	369	428	411	409	400	389	371	350	314	255	248	197	165	147	85
90		401	393	391	382	372	355	335	304	249	245	194	162	147	90
95		376	375	369	365	356	339	322	293	243	243	190	158	147	95
100		351	355	348	346	340	325	309	282	238	239	187	155	146	100
105			334	332	324	322	313	297	272	232	235	185	152	144	105
110			321	316	307	305	301	285	262	228	230	182	149	142	110
115			307	300	294	292	289	275	252	223	224	179	146	141	115
120			292	285	283	279	275	265	243	218	219	176	143	139	120
125				275	271	265	260	256	235	212	213	172	140	138	125
130				265	258	253	246	247	227	206	207	168	137	136	130
135				255	245	243	237	237	219	201	201	164	134	134	135
140				244	232	234	230	226	211	196	194	160	130	132	140
150					214	216	213	208	194	186	183	152	123	127	150
160						199	196	193	178	175	172	145	117	122	160
170						186	180	181	168	161	162	138	111	118	170
180						176	171	167	156	150	150	131	106	114	180
190							162	155	144	142	137	124	101	110	190
200								146	134	134	127	118	96	105	200
210								139	128	124	121	112	91.5	101	210
220								132	121	116	115	101	87	97.5	220
230									114	108	108	91	78.5	91.5	230
240									107	102	100	81.5	68.5	86	240
250										97.5	93	74	58.7	82	250
260										93.5	89	67	52.3	76	260
270											85.5	61	46.2	71	270
280												56.6	40.8	67	280
290												53.8	36.5	63	290
300												51.2	33.4	56.4	300
310													30.4	49.2	310
320													28.4	43.1	320
330														38.7	330
340														36.1	340

TAB 147004 / 147040

Lifting heights on SDB/SDBW boom/derrick combination.

LR 1400/2



Lifting capacities on SW boom/jib combination.

LR 1400/2



87°
92 ft – 115 ft



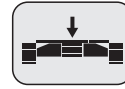
92 ft – 299 ft



360°



341800 lbs



94800 lbs

ft	92 ft										115 ft										ft		
	92 ft	115 ft	138 ft	161 ft	184 ft	207 ft	230 ft	253 ft	276 ft	299 ft	92 ft	115 ft	138 ft	161 ft	184 ft	207 ft	230 ft	253 ft	276 ft	299 ft			
40	305										299											40	
45	287	273									274	258										45	
50	262	252									249	239										50	
55	238	229	220								227	218	210									55	
60	218	210	202	195							208	200	193	185								60	
65	201	194	186	180	168	138					192	185	178	172	156							65	
70	186	180	173	167	160	138					178	172	166	161	152							70	
75	173	168	162	156	150	137	118				166	161	155	150	144	127	110					75	
80	160	157	151	146	141	134	117	98			156	150	145	140	135	125	109	92				80	
85	147	147	142	137	132	127	116	98	82.5		146	141	136	132	127	122	108	92	77.5			85	
90	137	137	134	129	124	120	114	97.5	82.5		137	133	129	124	120	116	107	91.5	77.5			90	
95	128	128	126	122	117	113	109	97	82	65	127	126	122	118	113	109	104	91	77	61.5		95	
100		119	119	115	111	107	103	96	81.5	64.5		119	115	111	107	103	99	90.5	76.5	61		100	
105		112	111	109	105	101	97.5	94.5	81	64		112	109	106	102	98	93.5	90.5	76	60.5		105	
110		106	105	104	100	96.5	93	89.5	81	63.5		105	104	101	96.5	93	89	85.5	75.5	60.5		110	
115		99.5	99	98	95.5	91.5	88	85	79.5	63.5		99	98.5	96	92	88.5	84.5	81.5	75	59.9		115	
120			93.5	92.5	91	87.5	84	81	77	63			93	91.5	87.5	84.5	80.5	77.5	74	59.5		120	
125			88.5	87.5	86.5	83	80	77	73.5	62.5			88	87.5	83.5	80.5	76.5	73.5	71	59		125	
130			84	83	82	79.5	76.5	73.5	70	62			83.5	83	80	77	73	70.5	67.5	58.5		130	
135				79.5	78	76	73	70	66.5	61				79	77	73.5	70	67	64.5	57.7		135	
140				75.5	74.5	73	70	67	63.5	59.6				75.5	73.5	70.5	67	64	61.5	56.7		140	
150				69	67.5	66.5	64	61	57.8	55.4				68.5	67.5	64.5	61	58.6	55.9	52.7		150	
160					61.5	60.5	58.2	55.7	52.4	49.9					61.5	59.1	55.8	53.3	50.6	47.4		160	
170					56.5	55.3	53.1	50.6	47.4	44.9					56.4	54.1	50.8	48.4	45.7	42.5		170	
180					52.1	50.9	48.7	46.3	43	40.6					52	49.8	46.6	44.1	41.4	38.2		180	
190						46.9	44.7	42.3	39.1	36.7						45.9	42.7	40.2	37.5	34.3		190	
200							41.1	38.7	35.5	33.1							39.2	36.7	34	30.8		200	
210							37.9	35.4	32.2	29.8							36	33.5	30.8	27.6		210	
220							35.1	32.6	29.4	26.9							33.4	30.7	28	24.7		220	
230								30	26.7	24.1								28.2	25.3	22		230	
240								27.6	24.3	21.6								25.9	22.9	19.4		240	
250									22	19.3									20.7	17		250	
260										20									18.7	15		260	
270										15.2										13.6		270	
280										13.8										12.4		280	
	42	36.4					29.5					42	36.4					29.5					

TAB 124125.1/2

Lifting capacities on SW boom/jib combination.

LR 1400/2



87°
138 ft – 184 ft



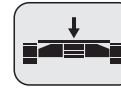
92 ft – 299 ft



360°



341800 lbs



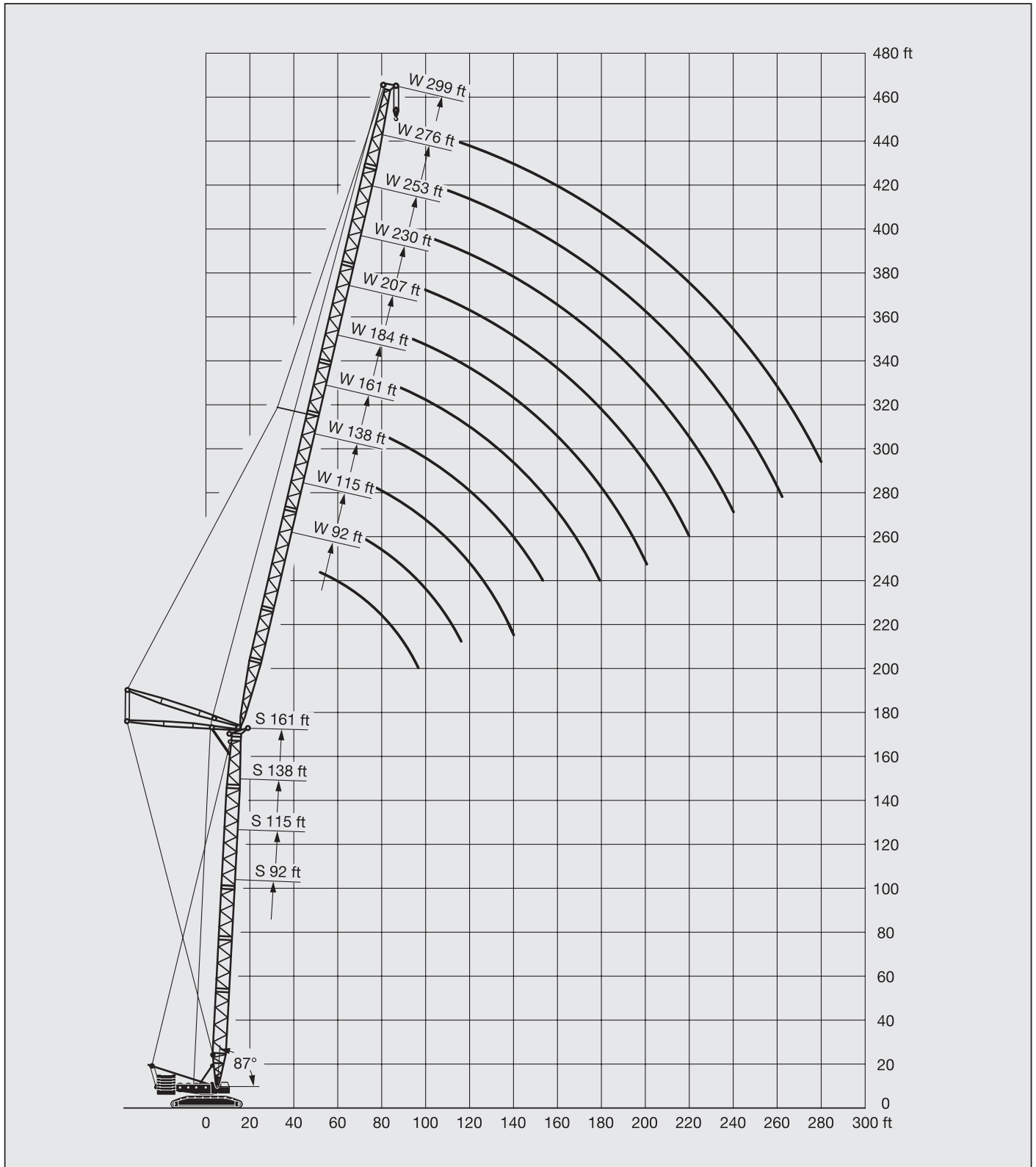
94800 lbs

ft	138 ft										161 ft										184 ft										ft
	92 ft	115 ft	138 ft	161 ft	184 ft	207 ft	230 ft	253 ft	276 ft	299 ft	92 ft	115 ft	138 ft	161 ft	184 ft	207 ft	230 ft	253 ft	276 ft	299 ft	92 ft	115 ft	138 ft	161 ft	184 ft	207 ft	230 ft				
40	270																											40			
45	258	232									242	212																45			
50	237	223									225	208																50			
55	216	208	195								205	198																55			
60	199	191	184	168							189	182	172	151														60			
65	184	177	171	163	141						175	169	162	148	128													65			
70	171	165	159	153	140						163	157	151	144	126													70			
75	160	154	149	143	136	119					153	147	141	137	124	109												75			
80	150	144	139	134	129	118	101				143	138	133	129	122	108	92											80			
85	141	136	131	126	121	117	100	85.5	70.5		135	130	125	121	116	107	91	79										85			
90	133	128	124	119	115	110	99.5	85	70.5		127	123	118	114	110	104	90.5	78.5										90			
95	126	121	117	113	108	104	98	85	70.5	57.2	121	116	112	108	104	99.5	89.5	78	66	53.2								95			
100		115	111	107	103	99	95	84.5	70	57.1		110	106	102	98.5	94	88.5	77	65.5	53								100			
105		109	105	101	97	93.5	90	84	70	56.8		105	100	97.5	93.5	89	86	76.5	65	52.6								105			
110		104	100	96.5	92.5	89	85.5	81	69.5	56.5		100	95.5	92.5	89	85	81.5	76	64.5	52.3								110			
115		98.5	95.5	91.5	88	84.5	81.5	77.5	69.5	56.1		95.5	91	88.5	84.5	80.5	77.5	74	64	52								115			
120			91	87.5	84	80.5	77.5	74	68.5	55.7			87	84.5	81	77	74	71	63.5	51.7								120			
125			87	83.5	80	77	74	70.5	67.5	55.3			83.5	80.5	77	73.5	70.5	67.5	62.5	51.4								125			
130			83	80	76.5	73.5	70.5	67	64.5	54.9			80	77	74	70	67	64.5	60.5	51.1								130			
135			79.5	77	73.5	70.5	67.5	64	61.5	54.2			77	74	71	67	64	61.5	58.2	50.7								135			
140			75.5	74	70.5	67.5	64.5	61	58.6	53.6			74	71	68	64	61.5	58.9	55.5	50.2								140			
150			68	64.5	62	59	55.8	53.1	49.9					65.5	62.5	59	56.1	53.7	50.1	47.1								150			
160				59.5	56.7	53.9	50.7	47.9	44.5						57.5	54.1	51.2	48.7	45	42.4								160			
170				54.6	51.8	49	45.9	43.1	39.7						52.7	49.3	46.5	43.9	40.3	37.8								170			
180				50.5	47.6	44.8	41.7	38.9	35.6						48.7	45.3	42.4	39.8	36.2	33.7								180			
190				43.8	41	37.9	35.1	31.7							41.6	38.7	36.1	32.5	29.9									190			
200																38.4	35.4	32.8	29.1	26.4								200			
210																34.5	31.3	28.5	25	23.2								210			
220																31.9	28.6	25.7	22.1									220			
230																26.1	23.1	19.4										230			
240																23.9	20.7	16.8										240			
250																18.5	14.5											250			
260																16.4	13.2											260			
270																12												270			
280																10.9												280			
	36.4					29.5					36.4					29.5					36.4					29.5					

TAB 124125.3/4/5

Lifting heights on SW boom/derrick/jib combination.

LR 1400/2



Lifting capacities on SDWB/BW boom/jib combination.

LR 1400/2



87°
115 ft -
138 ft



92 ft



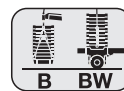
92 ft -
299 ft



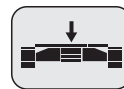
360°



297700 lbs



573000 lbs
49 ft



94800 lbs

ft	115 ft										138 ft										ft	
	92 ft	115 ft	138 ft	161 ft	184 ft	207 ft	230 ft	253 ft	276 ft	299 ft	92 ft	115 ft	138 ft	161 ft	184 ft	207 ft	230 ft	253 ft	276 ft	299 ft		
50	381										340											50
55	362	312	262								329	280										55
60	346	302	257	214							317	272	234	197								60
65	330	292	253	211							305	266	229	194								65
70	316	283	247	208	169						293	260	225	191	156							70
75	301	274	242	205	167	137					282	253	221	188	154	128						75
80	285	264	236	202	164	135	118				273	245	217	186	152	126	111					80
85	266	255	229	200	162	132	117				265	237	212	183	150	124	109					85
90	248	243	222	197	160	130	116	97	80		257	229	206	180	148	122	108	86.5				90
95	231	227	216	193	158	127	114	96	79.5	64	245	222	201	177	146	120	107	86	73	57.4		95
100		212	208	188	156	125	113	95.5	79	63.5		215	195	174	144	118	106	85	72.5	56.8		100
105		199	198	183	153	123	112	94.5	78.5	62.5		210	190	170	141	117	105	84	72	56.2		105
110		188	187	179	149	121	111	94	78	62		201	185	166	138	115	104	83.5	71	55.7		110
115		178	177	173	146	119	109	93.5	77.5	61.5		189	182	162	135	113	103	82.5	70.5	55.1		115
120		167	169	166	142	116	108	92.5	77	60.5		174	177	159	133	110	102	82	70	54.5		120
125			161	157	139	113	106	92	77	60			172	155	130	108	100	81	69.5	53.8		125
130			153	150	136	110	105	91	76.5	59.4			164	152	128	105	99	80.5	69	53.2		130
135			146	144	133	107	103	90.5	76	58.8			155	148	125	102	98	79.5	68.5	52.5		135
140			138	138	130	104	102	89.5	76	58.1			146	145	122	100	96.5	78.5	68	51.8		140
150				126	122	98.5	99.5	88.5	75	56.8				135	118	95.5	94.5	77	67	50.4		150
160					113	93.5	97	87	74.5	55.5					114	91	92	76	65.5	49		160
170					105	89	94.5	85.5	73	54.2					111	87	90	74.5	64.5	47.8		170
180					97	85	91	84.5	72	53.1					102	83	88	71	64	46.6		180
190						81.5	86	81.5	71	52						80	84.5	67.5	61.5	45.4		190
200						78	80.5	77	70	51						76.5	80.5	63.5	58.7	44.3		200
210							75	72	68.5	50							77.5	59.9	55.4	43.2		210
220							69.5	67.5	65.5	49							73.5	56.5	52.3	42.2		220
230								63	61.5	48.2								53.2	49.3	41.2		230
240								58.5	57.5	47.3								50	46.4	40		240
250									53.7	46.4									43.6	38.5		250
260									50.1	45.6									41	36.1		260
270									46.6	43.2									38.2	34		270
280										40.4										32		280

TAB 124118.1



87°
161 ft -
184 ft



92 ft



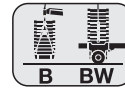
92 ft -
299 ft



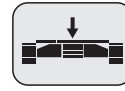
360°



297700 lbs



573000 lbs
49 ft



94800 lbs

ft	161 ft										184 ft										ft	
	92 ft	115 ft	138 ft	161 ft	184 ft	207 ft	230 ft	253 ft	276 ft	299 ft	92 ft	115 ft	138 ft	161 ft	184 ft	207 ft	230 ft	253 ft	276 ft	299 ft		
50	295										262										50	
55	286	247									254	219									55	
60	278	241	209								246	214	186								60	
65	269	235	204								238	209	182								65	
70	260	230	200	173	146						230	204	178	155							70	
75	251	224	196	171	144	119					222	199	174	152	132						75	
80	243	218	192	168	142	117	101				215	194	170	149	130	107	92				80	
85	235	211	188	166	141	116	100				209	188	166	146	128	105	90.5				85	
90	229	205	183	163	139	114	99	81.5			204	183	162	144	126	103	89	75.5			90	
95	224	199	178	160	137	113	98	80.5	68		202	177	158	141	125	101	88	74.5	62.5		95	
100	215	194	174	156	135	111	97	80	67.5	50.1	200	173	154	139	123	100	87	74	62	46.2	100	
105		190	169	152	133	110	96	79	67	49.5		170	150	136	121	98.5	85.5	73	61.5	45.6	105	
110		187	166	149	131	108	95	78.5	66.5	48.9		168	146	133	119	97	84.5	72.5	61	45	110	
115		183	162	145	128	106	93.5	77.5	66	48.3		166	143	130	116	95.5	83.5	72	60.5	44.5	115	
120		175	159	142	126	104	92.5	77	65.5	47.7		164	141	128	114	93.5	83	71	60	44	120	
125			156	139	123	102	91	76.5	64.5	47.2			139	125	112	91.5	82	70.5	59.5	43.5	125	
130			153	136	121	99.5	90	75.5	64.5	46.7			137	122	110	89.5	80.5	70	59	43	130	
135			149	133	119	97.5	88.5	74.5	63.5	46.1			135	121	108	87.5	79.5	69	58.5	42.5	135	
140			143	129	117	95.5	87	74	63	45.4			132	119	106	86	78	68.5	58.1	41.9	140	
150				125	113	91	84	72.5	62	43.9				116	102	82.5	75	66.5	57	40.8	150	
160				118	109	87.5	80.5	70.5	61	42.4				111	98.5	79	72	64.5	55.8	39.5	160	
170				101	104	84	76	68.5	59.9	41.1				103	94	76	69	62.5	54	38.2	170	
180					99.5	81	72	65	58.7	39.8					90	72.5	65	60	52.3	37	180	
190						77.5	68.5	61.5	56.4	38.5						68.5	61	57.3	50.6	35.9	190	
200						75	65	58.1	53.5	37.6						65	58.1	54	48.5	34.9	200	
210							61.5	54.8	50.5	37.1							55.4	50.9	45.6	34.1	210	
220							58.5	51.7	47.7	36.7								52.6	48.1	43	33	220
230								48.7	44.9	35.4								49.9	45.3	40.5	31.1	230
240								45.7	42.3	33.8									42.5	38.2	29.2	240
250									39.8	32.2										35.9	27.7	250
260									37.4	30.7										33.6	26.6	260
270									34.7	29.3										31.3	25.5	270
280										27.9											24.4	280
290										26.4											23.2	290
300										24.8											22	300

TAB 124118.2



87°
207 ft -
230 ft



92 ft



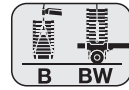
92 ft -
299 ft



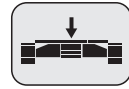
360°



297700 lbs



573000 lbs
49 ft



94800 lbs

ft	207 ft										230 ft										ft		
	92 ft	115 ft	138 ft	161 ft	184 ft	207 ft	230 ft	253 ft	276 ft	299 ft	92 ft	115 ft	138 ft	161 ft	184 ft	207 ft	230 ft	253 ft	276 ft	299 ft			
55	222	195									195											55	
60	215	190	166								189	167										60	
65	209	186	163								184	163										65	
70	202	181	159	138							179	160	141	124								70	
75	196	177	156	136	118						174	157	138	121	105							75	
80	190	172	153	133	116	96.5					169	153	135	119	104	86.5						80	
85	185	167	150	131	115	95					164	148	132	117	102	85						85	
90	182	162	146	129	113	93.5	82.5				161	144	128	115	100	83.5	73.5					90	
95	181	158	142	127	112	92	81.5	68.5	56.9		160	141	125	113	99	82.5	72.5	62				95	
100	181	154	139	124	110	91	80.5	68	56.4	41.9	159	137	122	111	97.5	81	71	61	50.7	38.3		100	
105		151	135	122	108	89.5	79.5	67	55.9	41.3		134	119	108	96	80	70	60	50.2	37.7		105	
110		150	132	119	106	88.5	78.5	66.5	55.5	40.7		133	117	106	93.5	78.5	69	59.4	49.7	37.1		110	
115		148	130	117	104	87	77.5	65.5	55.1	40.2		131	115	103	91.5	77.5	68	58.6	49	36.5		115	
120		146	128	114	102	85.5	76.5	65	54.6	39.7		130	113	101	89.5	76	67	57.9	48.3	36		120	
125			126	112	100	83.5	75	64	54	39.2			111	98.5	88	74.5	66	57.1	47.7	35.4		125	
130			124	110	98	82	73	63.5	53.4	38.7			109	96.5	86	72.5	65	56.4	47	35		130	
135			122	107	96	80	72	62.5	52.8	38.2			108	95	84.5	71	64	55.5	46.4	34.5		135	
140			120	105	94	78.5	70.5	61.5	52.2	37.8			106	93.5	82.5	69.5	63	54.6	45.8	34		140	
150				102	91	75.5	67.5	59.5	51.1	36.8				91.5	80	66.5	60.5	52.5	44.6	33.2		150	
160				99.5	88	72.5	65	57.3	49.9	35.8				89.5	78.5	64	57.8	50.4	43.4	32.3		160	
170				97.5	85	69.5	63	55.3	48.4	34.8				87.5	77	62	55.4	48.3	41.9	31.5		170	
180					81	66	60	53.4	46.6	33.7					76	59	53.1	46.3	40.1	30.6		180	
190						62.5	57.1	51.2	44.8	32.7					74.5	55.9	50.8	44.4	38.4	29.6		190	
200						58.8	54.1	48.7	42.9	31.7						52.9	48.4	42.6	36.7	28.5		200	
210							51.3	46.1	41.1	30.8							45.9	41	35.1	27.4		210	
220							48.6	43.9	38.5	30							43.5	38.8	33.6	26.3		220	
230							46.1	41.5	36.2	28.8							41.2	36.7	31.7	25.4		230	
240								39.3	34	27.6								34.7	29.8	24.5		240	
250									31.9	26.3									32.8	27.9	23.3		250
260									29.9	25.2									30.9	26.1	22		260
270									27.9	23.9										24.4	20.8		270
280										22.7											19.7		280
290										21.5											18.5		290
300										20.3											17.4		300

TAB 124118.3

Lifting capacities on SDWB/BW boom/jib combination.

LR 1400/2



87°
253 ft –
276 ft



92 ft



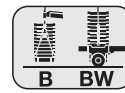
92 ft –
299 ft



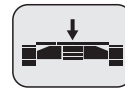
360°



297700 lbs



573000 lbs
49 ft

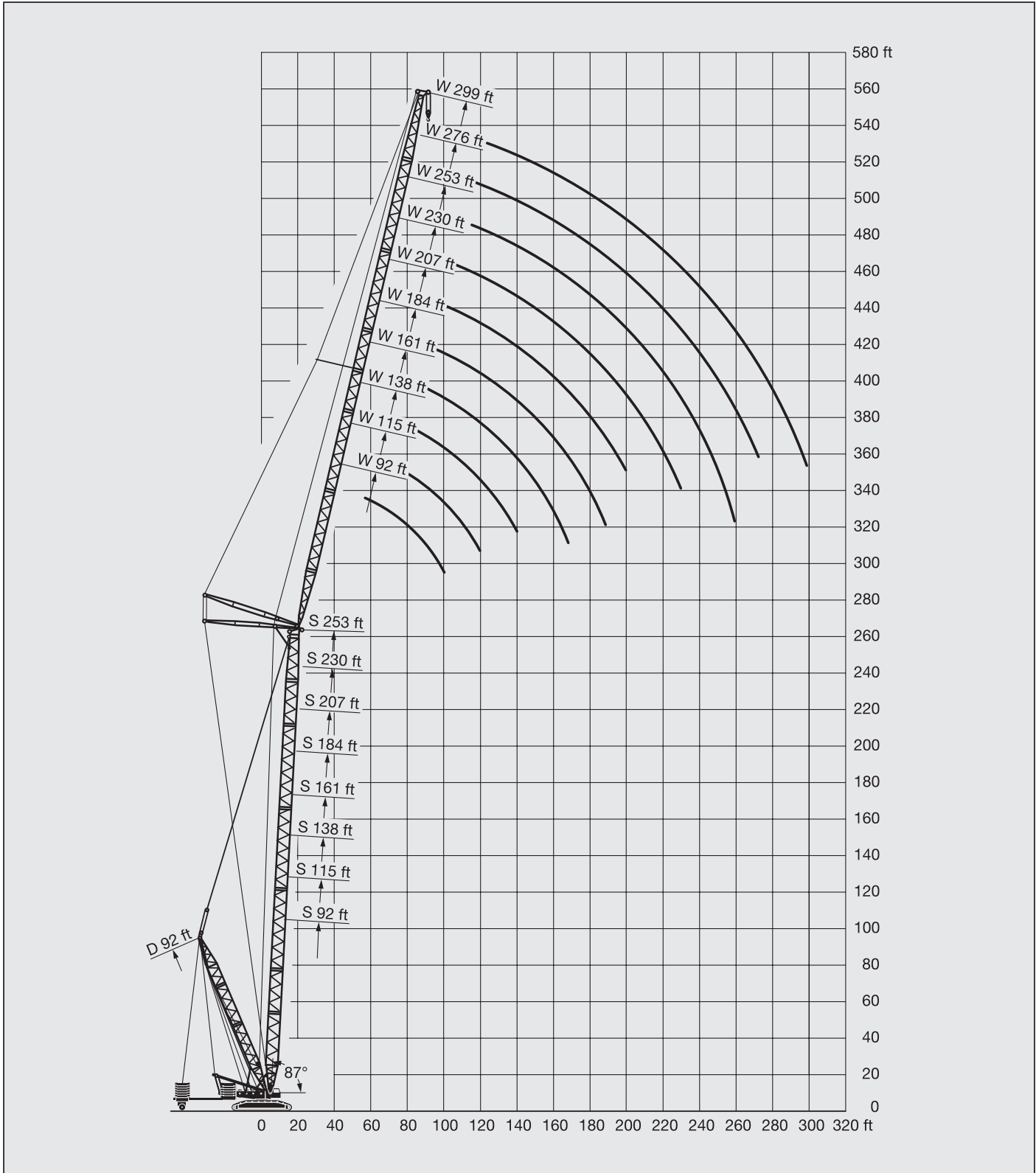


94800 lbs

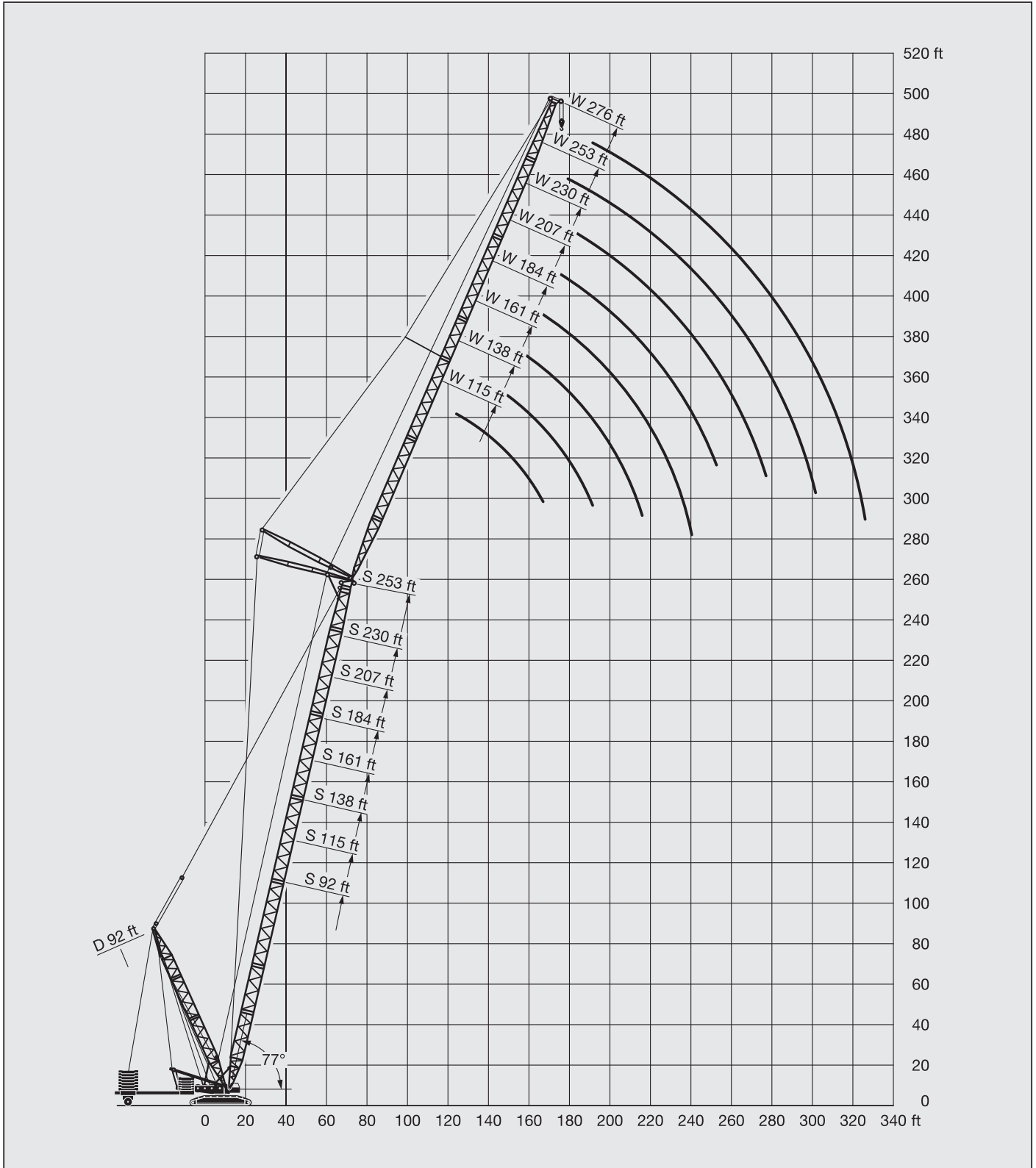
ft	253 ft											276 ft								ft
	92 ft	115 ft	138 ft	161 ft	184 ft	207 ft	230 ft	253 ft	276 ft	299 ft	115 ft	138 ft	161 ft	184 ft	207 ft	230 ft	253 ft	276 ft		
55	173																			55
60	168	148									130									60
65	163	144									127									65
70	159	141	125								124	108								70
75	154	138	123	107	93						121	106	93.5							75
80	151	135	120	105	91	77					118	104	91.5	80.5						80
85	148	131	117	103	89.5	75.5					114	101	89.5	79						85
90	145	127	114	101	88	74	64.5				111	98.5	87.5	77.5	67	57.8				90
95	142	123	111	99	86.5	73	63.5	54.1			108	96	85.5	76	66	56.7	49			95
100	139	120	108	96.5	85	71.5	63	53.1	44.8		105	94	83.5	74.5	65	55.7	48.2	39.9		100
105		118	106	94.5	83	70.5	62	52.2	44	33.6	103	91.5	82	73	64	54.7	47.4	39.1		105
110		116	103	92	81.5	69.5	61	51.4	43.2	33.1	101	89.5	80.5	72	63	53.8	46.7	38.4		110
115		114	101	90	79.5	68.5	60	50.6	42.5	32.6	99.5	88	78.5	70	61.5	52.9	46	37.7		115
120		113	98.5	88	77.5	67	59.1	49.8	41.9	32.1	98.5	86	77	68.5	60	52	45.4	36.8		120
125			97	86.5	76	65.5	57.6	49	41.2	31.5	97	84.5	75.5	67	58.7	51.2	44.7	35.5		125
130			95.5	85	74	64	56.3	48.3	40.6	30.3	95.5	83.5	74	65.5	57.4	50.4	44.1	34.2		130
135			94	83.5	72.5	62.5	55	47.4	40	29.2		82	73	64	56.2	49.4	43.4	33		135
140			92.5	82.5	71	61	53.8	46.5	39.4	28.2		80.5	71.5	62.5	55	48.5	42.6	31.8		140
150				80	68.5	58.5	51.5	44.6	38.1	26.3		69	60	52.8	46.4	40.9	29.8			150
160				78	67	56.1	49.2	42.6	36.7	24.7			67	58.1	50.9	44.2	39.2	28.3		160
170				75.5	65.5	54	47.1	40.8	35.1	23.4			65.5	56.6	49.2	42.3	37.6	27.2		170
180				64	52.3	45.4	39.1	33.6	22.3					55.2	47.6	40.4	35.4	26.3		180
190				63	50.3	43.8	37.5	32.1	21.4					54	46.1	38.9	33.4	25.4		190
200					48.1	42.4	36	30.6	20.6						44.7	37.6	31.9	24.6		200
210							40.8	34.7	29.3	19.9						36.6	30.8	23.8		210
220							38.5	33.7	28.2	19.5						35.6	30.5	23.3		220
230							36.4	32.1	27.2	19.3						34.7	29.9	22.9		230
240								30.3	26	19.1							29.2	22.5		240
250								28.6	24.3	18.9							28.4	22.1		250
260								27.1	22.7	18.8							26.8	21.8		260
270									21.1	17.9								20.8		270
280										16.8								19.5		280
290										15.8										290
300										14.8										300

TAB 124118.4

Lifting heights on SDWB/BW boom/derrick/jib combination.



Lifting heights on SDWB/BW boom/derrick/jib combination.



Lifting capacities on SDWB/BW boom/jib combination.

LR 1400/2



67°
115 ft -
184 ft



92 ft



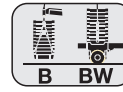
92 ft -
299 ft



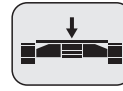
360°



297700 lbs



573000 lbs
49 ft



94800 lbs

ft	115 ft										138 ft										ft		
	92 ft	115 ft	138 ft	161 ft	184 ft	207 ft	230 ft	253 ft	276 ft	299 ft	92 ft	115 ft	138 ft	161 ft	184 ft	207 ft	230 ft	253 ft	276 ft	299 ft			
110	224																				110		
115	218																					115	
120	211									206												120	
125	205	200								199												125	
130	199	194								193	186											130	
135	194	188								188	182											135	
140	190	183	173							182	177	166										140	
150		173	167								167	161										150	
160			157	150							158	152	147									160	
170			147	142	132						152	145	140	126								170	
180			138	134	127							138	133	125								180	
190				125	121	97						133	127	122	95							190	
200				115	113	94	93							122	117	93.5	87					200	
210					104	91	93	74							112	92	87	67.5				210	
220						97	86.5	90.5	74	59.7					107	88.5	87	67.5	54.8			220	
230							90.5	83	85.5	74	60				101	85	87	67.5	54.9			230	
240								79.5	79.5	73	60	43.3					81.5	86	67.5	54.9	39.6	240	
250									74	71	60	43.3					79	84	67.5	54.9	39.6	250	
260										69	66.5	60	43.3				78.5	78	67.5	54.9	39.6	260	
270										65	61.5	59.1	43.3						67.5	54.9	39.6	270	
280												57.7	56.7	43.3				69	65.5	54.9	39.6	280	
290													54.4	52.7	43.3				61.5	54.9	39.6	290	
300														51.4	49.1	43.3			58.1	54.9	39.6	300	
310																				52.7	39.6	310	
320																					49.9	39.6	320
330																						39.6	330
340																						39.6	340
350																						38.3	350

TAB 124140.1

ft	161 ft										184 ft										ft	
	92 ft	115 ft	138 ft	161 ft	184 ft	207 ft	230 ft	253 ft	276 ft	299 ft	92 ft	115 ft	138 ft	161 ft	184 ft	207 ft	230 ft	253 ft	276 ft	299 ft		
130	183																					130
135	179																					135
140	174	164																				140
150	165	159																				150
160		150	146																			160
170		143	138	134																		170
180		138	132	128																		180
190			126	122	116																	190
200				117	112	90.5																200
210					112	108	90	82														210
220						109	104	89	82	63												220
230							100	86	82	63.5												230
240								97	83	82	63.5	51.4										240
250									80	82	63.5	51.4	36.8									250
260										78.5	79	63.5	51.4	36.8								260
270											77.5	76.5	63.5	51.4	36.8							270
280												74	63.5	51.4	36.8							280
290																						290
300																						300
310																						310
320																						320
330																						330
340																						340
350																						350
360																						360

TAB 124140.2

Lifting capacities on SDWB/BW boom/jib combination.

LR 1400/2



67°
207 ft -
276 ft



92 ft



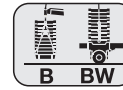
92 ft -
299 ft



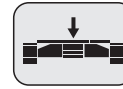
360°



297700 lbs



573000 lbs
49 ft



94800 lbs

ft	207 ft									230 ft									ft				
	115 ft	138 ft	161 ft	184 ft	207 ft	230 ft	253 ft	276 ft	299 ft	92 ft	115 ft	138 ft	161 ft	184 ft	207 ft	230 ft	253 ft	276 ft		299 ft			
160										134										160			
170	130									128	123									170			
180	124									122	118									180			
190	119	115									113	108								190			
200		110	106								108	104	99.5							200			
210		105	101	96								99.5	95	86						210			
220		102	97.5	93	80.5	70						95.5	91.5	84.5	71					220			
230			94	89.5	80.5	70							88	83	71					230			
240				86.5	80	70	53.8						85.5	81	71	59.5				240			
250				83.5	78.5	70	53.8	43.2						78	70.5	59.5	47.8			250			
260				81.5	76	69	53.8	43.2	30.8					75.5	68.5	59.5	47.8	38		260			
270					74	67.5	53.8	43.2	30.9					74	66.5	59.5	47.8	38		270			
280					72	65.5	53.8	43.2	30.9						65	58.8	47.8	38	28.1	280			
290						64	53.8	43.2	30.9						63.5	57.3	47.8	38	28.1	290			
300						62.5	53.8	43.2	30.9						63	55.8	47.8	38	28.1	300			
310						61.5	53.8	43.2	30.9							54.8	47.6	38	28.1	310			
320							53.4	43.2	30.9								47	38	28.1	320			
330								43.2	30.9								46.2	38	28.1	330			
340								43.2	30.9								45.8	38	28.1	340			
350								43.2	30.9									38	28.1	350			
360									30.9										38	28.1	360		
370									30.9											38	28.1	370	
380									30.9												38	28.1	380
390									30.9												38	28.1	390

TAB 124140.3

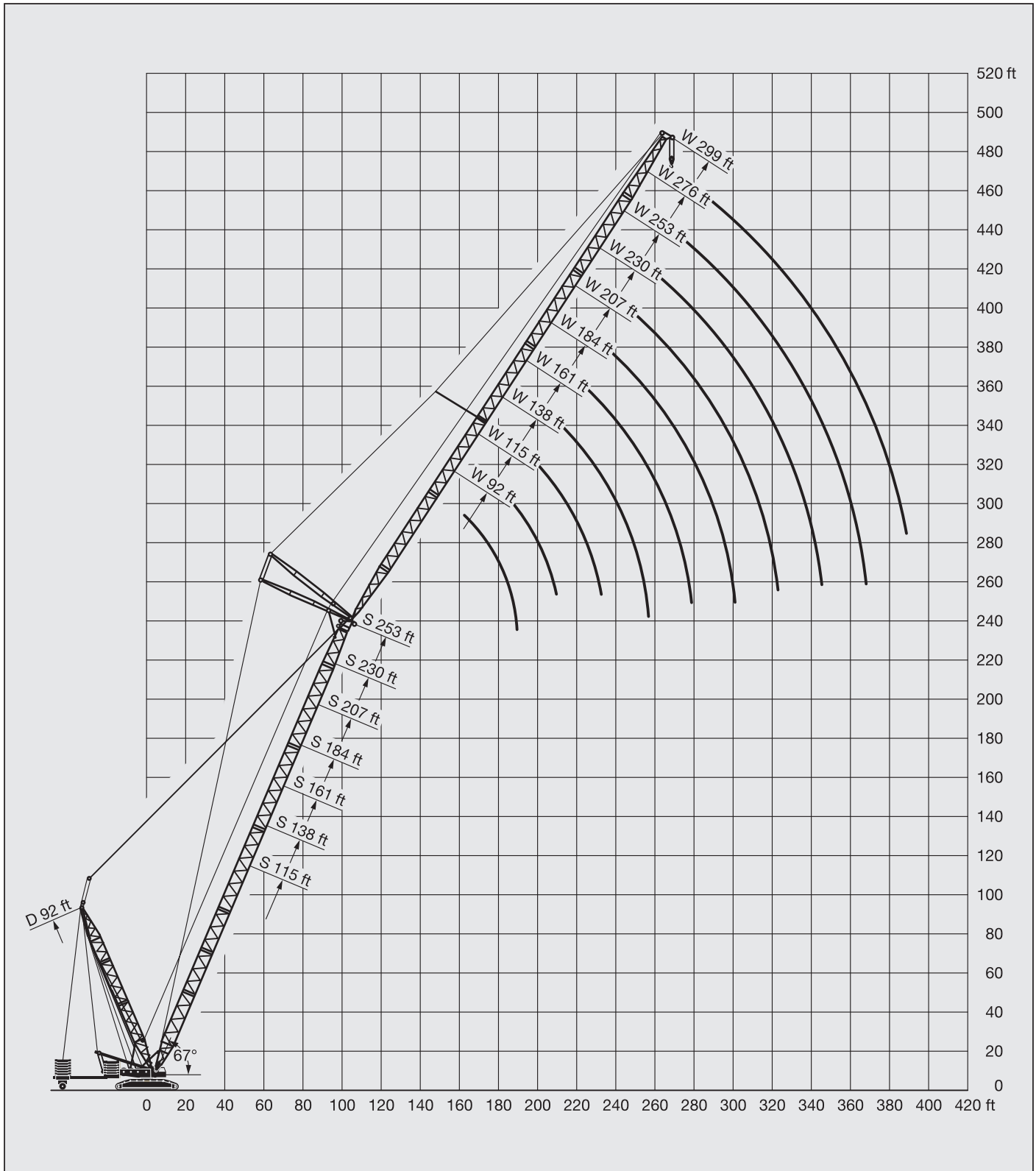
ft	253 ft									276 ft									ft	
	92 ft	115 ft	138 ft	161 ft	184 ft	207 ft	230 ft	253 ft	276 ft	299 ft*	115 ft	138 ft	161 ft	184 ft	207 ft	230 ft	253 ft	276 ft*		
170	120																			170
180	114																			180
190	110	105																		190
200		101	94.5									83								200
210			92.5	81.5								80.5	70							210
220			89	80.5	68							78	68	60						220
230			86	78.5	67.5								65.5	58.9						230
240				76.5	66.5	56.9							64	57.2	49.2					240
250				74	65.5	56.6	47							55	48	40.3				250
260				73.5	63.5	56.2	46.8	37.4						53.2	46.3	39.3	31.7			260
270					62	55	46.7	37.4						52.7	44.5	38.2	31.1			270
280					61	53.5	46.2	37.4	29						43.2	36.9	30.3	25.7		280
290						52	45.2	37.3	29	23.3						35.4	29.5	25.3	20.6	290
300						51.6	43.9	36.8	29	23.3						34.1	28.5	24.9	20.2	300
310							42.9	36	29	23.3						33.9	27.6	24.2	19.9	310
320							42.4	35.1	28.8	23.3							26.9	23.4	19.4	320
330								34.3	28.3	23.3							26.6	22.6	18.9	330
340								34	27.8	23.3							26.6	21.9	18.3	340
350								34	27.2	22.9										350
360									27	22.5								21.8	17.7	360
370									27	22.2										370
380									27	22										380
390									22	22										390

* only with ballast trailer

TAB 124140.4

Lifting heights on SDWB/BW boom/derrick/ jib combination.

LR 1400/2



BAY CRANE

www.baycrane.com



BAY CRANE SERVICE

11-02 43rd AVENUE, LONG ISLAND CITY, NY11101

TEL: 718-392-0800

FAX: 718-392-2353